

Butterflies of the Dolomites

Naturetrek Tour Report

2 - 9 July 2014



Amanda's Blue - P. Harnes



Alder Moth - I. Tulloch



Dusky Grizzled Skipper - P. Harnes



Mountain Clouded yellow - P. Harnes

Report by Paul Harnes

Images courtesy of Ian Tulloch and Paul Harnes



Naturetrek Mingledown Barn Wolf's Lane Chawton Alton Hampshire SO24 0NG England

T: +44 (0)1962 733051

F: +44 (0)1962 736426

E: info@naturetrek.co.uk

W: www.naturetrek.co.uk

Tour Leader: Paul Harmes

Participants: Janet Benoy
Matthew Limbrick
Penny Raynor
Ted Raynor
Fiona Tulloch
Ian Tulloch

Day 1

Wednesday 2nd July

Weather: Cloudy at first, with heavy rain later, clearing by late evening.

Six group members met with Paul at North Terminal, Gatwick Airport, for the 2.05pm British Airways flight, BA2584, to Venice Marco Polo Airport, which arrived at 5.15pm local time. Inside the terminal we cleared immigration in good time and then collected our minibus. Once the vehicle was loaded, we left the airport heading north along the A27 Autostrada. As we went we spotted a few birds including Magpie and Barn Swallow. Leaving the motorway at Ponte Nelle Alpi, we drove on through Belluno and into the National Park of the Bellunesi Dolomites.

After about an hour and a half, we stopped for a coffee break in Agordo. Whilst here, we recorded Common House Martin, Common Swift and Grey Heron. Continuing the journey, our route took us through Cencenighe and over the San Pellegrino Pass at 1,919 metres, before dropping into the Fassa Valley and the delightful hamlet of Tamion, near Vigo di Fassa. We were greeted at the family-run Hotel Gran Mugon by Stefano, and soon settled into our rooms. We met in the restaurant for a light dinner, and were introduced to two more members of the family, Genio and Katia. Paul then gave a brief outline of the next twenty-four hours before we retired to bed.

Day 2

Thursday 3rd July

Weather: Fine, warm and sunny.

From 6.30am members of the group came and went as the collection of moths attracted to the moth trap was examined. The previous night had been quite cold so there were only a few specimens for us to identify. Five species were present including Great Brocade, Peppered Moth and Broom Moth.

After breakfast Paul made a trip to the supermarket for the picnic ingredients and then, at 9.15am, we met outside the hotel and set off on foot to explore the meadows and woodland above Tamion.

It wasn't long before we were seeing butterflies including Mazarine Blue, Small Heath and Amanda's Blue. We also found the '*bippomedusa*' subspecies of Woodland Ringlet and well as the type species. Day-flying moths were very much in evidence, with Chimney Sweeper, Transparent Burnet, Burnet Companion and Small Purple-barred among them. Along our path we found lots of *Gymnadenia conopsea* (Fragrant Orchid), *Traunsteinera globosa* (Round-headed Orchid), *Salvia pratensis* (Meadow Clary), *Horminum pyrenaicum* (Dragonmouth) and *Moneses uniflora*

(One-flowered Wintergreen). Bird song was all around us, and we were accompanied by the song of Coal Tit, Western Bonelli's Warbler, Eurasian Blackcap, Tree Pipit, Robin, Chaffinch, Crested Tit and Siskin. On the return journey we followed the road for a short way before re-joining the path we had taken earlier. This was so we could check on a stand of *Cypripedium calceolus* (Lady's Slipper Orchid), which had one or two of its flowers remaining.

We returned to the hotel by 12.45pm. After a quick comfort break, we collected our vehicle and drove the short distance to Val di Monzoni. After an enjoyable picnic lunch in a lovely meadow setting with fabulous views, we began to explore. New butterfly sightings included Mountain Green-veined White, Alpine Blue and Dusky Grizzled Skipper. New moths included Shoulder-striped Wainscot, Silver-ground Carpet and the Crambid grass moth, *Crambus perlilla*. Alpine Swift and Common Swift were seen and Spotted Nutcracker was heard. We found a wide range of flora including *Corallorhiza trifida* (Coralroot Orchid), *Astragalus alpinus* (Alpine Milk-vetch), *Bartsia alpina* (Alpine Bartsia) and *Trollius europaeus* (Globeflower).

We arrived back at Tamion at 5pm having enjoyed our first full day in this beautiful area. We met at 6.45pm to talk through our day and start our first 'lists' session, before going to dinner. Following the meal, Paul again set the moth trap.

Day 3

Friday 4th July

Weather: Fine, warm and sunny, becoming hazy with cloud later.

Due to a much warmer night the moth catch was considerably increased, with in excess of 50 species being recorded. New moths included Pine Hawk-moth, Pine-tree Lappet, Small Chocolate-tip, Fern and Beautiful Arches. Birds were active around the large conifers located behind us with Great Spotted Woodpecker, Willow Tit and European Green Woodpecker all heard, and European Crested Tit, Chaffinch, and Carrion Crow seen.

Following breakfast we called at the supermarket to shop for our picnic. Outside the supermarket Black Redstart, Common Swift and Common House Martin were seen. From here we made our way to the cable-car in Vigo di Fassa just before 10am. We were soon ascending to the Ciampedie plateau, enjoying beautiful views from 1,997 metres over the Fassa Valley below. Before moving off through the Rosengarten we explored the meadows near the cable car station. We found Alpine Heath, Alpine Blue, Mazarine Blue, Clouded Yellow and Little Blue, but the star was a splendid Marsh Fritillary of the '*debilis*' subspecies which occurs in the Alps and Pyrenees, usually above 1,800 metres. The meadow also had good numbers of *Coeloglossum viride* (Frog Orchid) and *Gymnadenia albida* (Small White Orchid).

After enjoying these meadows we set off to follow Track 540 towards Gardeccia. We had only gone a few yards when we heard Spotted Nutcracker and European Robin. Our path took us past good stands of *Rhododendron ferrugineum* (Alpenrose) and there were some fabulous mountain views. Along the path we found Small Argent and Sable moth and Mountain Green-veined White.

Next we stopped for lunch by a ski ride. After eating we began to explore, and added Geranium Argus, Dingy Skipper and Large White butterflies, and Grass Rivulet, Pretty Pinion and Small Argent and Sable moths. Whilst searching the ride we saw several Spotted Nutcrackers. We continued to Gardeccia where we indulged in afternoon refreshments before making a circuit of the surrounding meadows. Butterflies were in short supply but

we did see Mountain Green-veined White, Titania's Fritillary and Dingy Skipper. We also added a lovely little European moth, Yellow Banded, to our moth list. A large boulder had a fine show of *Veronica bonarota* (Bluish Paederota).

With the shortage of insects we decided to return to the cable car station, with some group members also stopping at the Rifugio Negritella for a second round of refreshments. We caught the 4.40pm cable car from Ciampedie back down to Vigo di Fassa, getting quite good views of Alpine Chamois.

Day 4

Saturday 5th July

Weather: Overnight rain with early low cloud, clearing to cloudy with sunny periods.

The overnight temperature was a little warmer again. The number of moths on the hotel wall was increased and there was an exciting haul in the trap. New moths included 'Alpine' Y, Small Angle-shades, Alder Moth and the European noctuid *Xestia viridescens*.

At 9am we left the hotel and headed, via the supermarket, towards our highest location, the Sella Pass. At Canazei we turned west and, in a few kilometres, climbed over 750 metres up 23 marked 'tornanti' (hairpin bends) to the Sella Pass at 2,244 metres, parking just over the summit near Rifugio Passo Sella. From our vantage point the scenery was stunning, in excellent light.

Just after leaving the vehicles, the botanists in the group were pleased with the array of alpine flowers as we were now above the tree line, in the sub-montane belt. We found *Salix reticulata* (Net-leaved Willow), *Silene acaulis* (Moss Champion), *Pulsatilla alpina subsp. apiifolia* (Yellow Alpine Pasque-flower) and *Myosotis alpestris* (Alpine Wood Forget-me-Not).

We worked our way up the hillside, which had scattered large boulders and rocky outcrops, and it was not long before we found Yellow Banded moth and, a little further on, a good number of Dewy Ringlets. Birds included a flock of Alpine Chough, Northern Wheatear, White-winged Snowfinch, Common Linnet and a good number of the alpine race of Ring Ouzel (*subsp. alpestris*). We also heard, and saw, several Alpine Marmots which, obligingly, allowed the photographers to get quite close. There was a gentle but chilly breeze, and the insects were keeping a low profile, so we decided to make our way down to an area where it was more sheltered. Here we added Little Blue and Mazarine Blue, before setting up our picnic among the rocks. During the meal, Water Pipit was heard and seen, singing from a vantage point on the chair-lift cable.

After lunch, we set off up the track behind Rifugio Passo Sella in an area known as the City of Stone. Here it was rockier with a few smaller pine trees. We found *Potentilla nitida* (Pink Potentilla), *Leontopodium alpinum* (Edelweiss) and *Daphne striata* (a Daphne). A new micro-moth was added to the tour list, *Pyrausta nigrata* (a Crambid), and we had some good photo opportunities of butterflies we had already seen including Woodland Ringlet and Alpine Heath.

From here we returned to the Rifugio Passo Sella for some well-earned refreshments, before re-joining our vehicle for the return journey to Tamion. As we were leaving the car park, a Common Kestrel was spotted hovering over the road and plunging onto the verge. As we drew alongside, it took off with a Vole in its talons. We arrived back at our hotel in time for a shower before meeting to call the log before dinner.

Day 5

Sunday 6th July

Weather: Mostly fine and warm, with sunny periods and some very light rain.

Today's catch at the moth-trap included Purple Bar, Peach Blossom, Lesser Swallow Prominent, Clay, Scallop Shell and Small Phoenix.

We left the hotel at 8.40am for a day in the Paneveggio Natural Park. After calling at the supermarket we drove down the Fassa Valley towards Predazzo. Our first stop was a patch of rough ground beside a builder's yard, with a rocky area behind. As we arrived Paul spotted an Apollo in flight. It landed on the vegetation so everyone was able to get some pictures. Together with a second specimen, the Apollo showed well during the hour we were there. When the sun shone, butterflies and moths were on the wing and, in an exciting hour, we saw Heath Fritillary, Amanda's Blue, Clouded Yellow, Pearly Heath and Marbled White. Moths included Transparent Burnet, Nine-spotted, Red-necked Footman, Rusty-dot Pearl, and there was also an interesting selection of other insects.

We now moved on eastwards, stopping by the Paneveggio Natural Park Visitor Centre. As we started to explore the meadow and woodland edge opposite the centre, the cloud obscured the sun and butterflies were very hard to find, with only Black-veined White and Woodland Ringlet (subsp. *hippomedusa*) recorded. We did, however, find a number of micro 'grass moth' species. *Crambus perlilla* (a Crambid) was particularly numerous and we also saw *Pammene populana* (a Tortrix) and *Catoptria marginaritella* (a Crambid), together with the macros, Silver Y and Burnet Companion. By now it was time to eat, so we used the picnic area at the centre for our lunch spot. During the meal, a Grey Heron flew over.

After an enjoyable picnic lunch we drove to Val Venegia for an afternoon exploring a lovely valley. Once into the valley we drove to the top car park, and set off on foot up the track. Once again, the cloud cover meant that we only managed to find four butterfly species: Woodland Ringlet, Mountain Green-veined White, a Grizzled Skipper and an Alpine Grizzled Skipper, both of the latter being new to the list. On the plus side, the plants along the river gravels were particularly rich, with *Papaver aurantiacum* (Rhaetian Poppy) and *Gypsophila repens* (Gypsophila). The adjacent marsh had good numbers of *Dactylorhiza majalis* (Broad-leaved Marsh Orchid) and *Dactylorhiza alpestris* (Alpine Broad-leaved Marsh Orchid).

We decided to return to Predazzo to explore another section of rough grassy verge. Along the way we saw a small group of Red Deer. The verge produced two more butterflies new to the trip list: False Heath Fritillary and Small White. However, the highlight was a young Smooth Snake.

It was now time to return to Tamion for our evening meal, which comprised of a selection of traditional 'Ladin' dishes.

Day 6

Monday 7th July

Weather: Mostly fine and warm, but cloudy with sunny periods and rain in the evening.

The hardy moth people were out by 6.30am checking the overnight catch. Again there were new additions including Red-green Carpet, Cloaked Pug, Beautiful Carpet and Scarce Silver Y. There were also five Pine Hawk-moths and a Small Elephant Hawk-moth.

At 9am we made a short stop at the supermarket. While Paul was shopping, the group saw Fieldfare, European Greenfinch, Common Swift, and Black and Common Redstarts. Soon we were on our way to the San Pellegrino Pass, arriving before 10am and parking near 'Miralago'. Our aim for the morning was to check the meadows behind the car park. New butterfly species included Mountain Clouded Yellow, Chalk-hill Blue, Olive Skipper and a fleeting glimpse of Scarce Copper. Birds were numerous, calling and flying between the trees in the meadow. We saw Lesser Redpoll, Tree Pipit and Siskin. A good number of day-flying moths were also recorded. These included Grass Rivulet, Small Argent and Sable, Small Purple-barred, Burnet Companion and a good number of 'Crambid' Grass Moths. Interesting plants included *Crepis aurea* (Golden Hawk's-beard), *Paradisea liliastrum* (St. Bruno's Lily), *Veratrum album* (White False Helleborine) and *Oxytropis campestris* (Yellow Milk-vetch).

We picnicked in the meadow above the car park, enjoying our meal in some extended sunshine before setting off for our afternoon walk. We stopped at Miralago to watch thousands of tadpoles at the edge of the lake, and then made the pleasant short walk to Val Dai Be. Here we found Dingy Skipper, Geranium Argus, Small White and Pearl-bordered Fritillary. Content with our sightings, we retired to the Ristorante Bar Miralago for refreshments before making the journey back to Tamion.

Day 7

Tuesday 8th July

Weather: Cloudy and wet for most of the day.

The moth trap continued to produce new moths, with Poplar Grey, Ingrailed Clay, Dot Moth and Common Footman all additions to the trip list.

At 9.15am we met at the vehicle and set off in a new direction, heading west. We drove over the Costalunga Pass and down into Sud Tirol, towards Bolzano. Our first stop was below Ponte Nova. Our plan was to check a disused quarry, where a sawmill stores logs, in an area known as Eggental. As we set off we crossed a bridge and, looking down on the river, spotted a Grey Wagtail. Continuing into the quarry area, our first encounter was with Marbled White and Ringlet. Continuing along the path, Eurasian Blackcap and Long-tailed Tits were seen, and a solitary Common Frog. It was now starting to rain, but we did find Little Blue, Small Skipper and Marbled Fritillary roosting in vegetation. Although the wet weather caused the butterflies to retreat, the same could not be said for the day-flying Moths. Common Wave, Latticed Heath, Common Heath, Shaded Broad-bar, Five-spot Burnet, Six-spot Burnet and Silver-ground Carpet were all found. We also found Nine-spotted moth but, unfortunately, it was in the jaws of a Crab Spider. In addition we also found a new micro for the tour list, *Anania lancealis* (a Crambid), together with Great Green Bush-cricket, Dark Bush-cricket, and Spotted Nutcrackers feeding young.

By now the rain was extremely heavy so we returned to the Costalunga Pass, and the Pizzeria Antermont, where we enjoyed a much needed warm lunch of soup and brioche. During the meal we saw Spotted Nutcracker, Fieldfare, Black Redstart and Common Swift. After lunch we drove back down to a point above Ponte Nova, but the rain was even heavier, so we made our way back to the hotel. After an hour to get showered and warmed up, we worked on identifications from some of our photos, as well as some of the unidentified moths we had caught in the trap. We then had dinner and retired to bed.

Day 8

Wednesday 9th July

Weather: Rain early on becoming cloudy through the morning. Hot and sunny in Venice.

The night temperature had dropped somewhat, and this was reflected in the number of moths in the Trap. Twelve individuals were all we had; however, there was one new species, a Purple-shaded Gem.

After breakfast we said our farewells to Stefano and Genio and left Tamion. We retraced our route to Venice, travelling back over San Pellegrino Pass, past Agordo to Belluno and then the A27 Autostrada south. As we had not had time to do so on the day of our arrival, we stopped to explore the riverside gravels and scrubby woodland at the Candaten picnic site, south of Agordo (in the Bellunesi National Park). It was rather overcast with a chilly breeze and insects were difficult to find. We did manage a solitary Small White butterfly, and there were a number of Nine Spotted moths around. Western Bonelli's Warbler was singing, and Marsh Tit, Common Firecrest and Common Chiffchaff were also heard. The two 'stand-out' species were Marsh Warbler, and a solitary, adult Goat Moth, found by Ted.

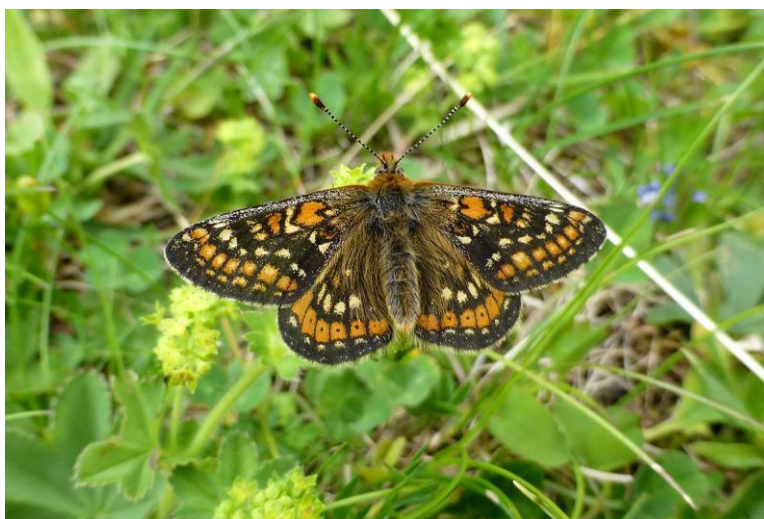
After our final picnic of the tour, we continued on our way to Venice Marco Polo Airport, to catch our British Airways flight BA 2585 back to London Gatwick.

Receive our e-newsletter

Join the Naturetrek e-mailing list and be the first to hear about new tours, additional departures and new dates, tour reports and special offers. Visit www.naturetrek.co.uk to sign up.

Naturetrek Facebook

We are delighted to launch the Naturetrek Facebook page so that participants of Naturetrek tours can remain in touch after the holiday and share photos, comments and future travel plans. Setting up a personal profile at www.facebook.com is quick, free and easy. The [Naturetrek Facebook page](#) is now live; do please pay us a visit.



Marsh Fritillary - *Eurodryas aurinia* subsp. *debilis* - P. Harnes

Species Lists

Butterflies

Location	Elevation	Code
Venice Airport/motorway svcs		V
Bellunesi National Park	440m	B
Tamion	1548m	T
Val di Monzoni	1526m	M
Rosengarten	1997m	R
Predazzo	1018m	Pr
Paneveggio Natural Park	1450m	P
Eggental	880-980m	E
Costalunga Pass	1752m	C
Sella Pass	2213m	S
San Pellegrino Pass	1920m	SP

	Common name	Scientific name	July							
			2	3	4	5	6	7	8	9
1	Apollo	<i>Parnassius apollo</i>					Pr			
2	Black-veined White	<i>Aporia crataegi</i>					P/Pr			
3	Large White	<i>Pieris brassicae</i>			R					
4	Small White	<i>Artogeia rapae</i>					Pr	SP	B	
5	Mountain Green-veined White	<i>Artogeia bryoniae</i>		M	R	S	P	SP		
6	Green-veined White	<i>Artogeia napi</i>			R					
7	Mountain Clouded Yellow	<i>Colias phicomone</i>						SP		
8	Berger's Clouded Yellow	<i>Colias alfacariensis</i>						SP		
9	Clouded Yellow	<i>Colias crocea</i>			R		Pr	SP		
10	Brimstone	<i>Gonepteryx rhamni</i>			R					
11	Wood White	<i>Leptidea sinapis</i>		T/M			P/Pr	SP		
12	Scarce Copper	<i>Lycaena virgaureae</i>						SP		
13	Little Blue	<i>Cupido minimus</i>		M	R	S	Pr/P	SP	E	
14	Geranium Argus	<i>Eumedonia eumedon</i>			R			SP		
15	Brown Argus	<i>Aricia agestis</i>		M						
16	Alpine Blue	<i>Albulina orbitulus</i>		M	R			SP		
17	Mazarine Blue	<i>Cyaniris semiargus</i>		T/M	R	S	Pr/P	SP		
18	Amanda's Blue	<i>Agrodiaetus amandus</i>		T/M			Pr/P	SP		
19	Chalkhill Blue	<i>Lysandra coridon</i>						SP		
20	Common Blue	<i>Polyommatus icarus</i>					P			
21	Small Tortoiseshell	<i>Aglais urticae</i>		T/M	R	S	Pr/P	SP		
22	Red Admiral	<i>Vanessa atalanta</i>		T	R					
23	Painted Lady	<i>Vanessa cardui</i>					P	SP		
24	Dark Green Fritillary	<i>Argynnis aglaja</i>					P			
25	Marbled Fritillary	<i>Brenthis daphne</i>							E	
26	Titania's Fritillary	<i>Clossiana titania</i>		M	R			SP		
27	Pearl-bordered Fritillary	<i>Clossiana euphrosyne</i>						SP		
28	Small Pearl-bordered Fritillary	<i>Clossiana selene</i>						SP		
29	False Heath Fritillary	<i>Melitaea diamina</i>					Pr			
30	Heath Fritillary	<i>Mellicta athalia</i>		T			Pr			
31	Marsh Fritillary	<i>Euphydryas aurinia debilis</i>			R	S		SP		
32	Marbled White	<i>Melanargia galathea</i>					Pr		E	
33	Woodland Ringlet	<i>Erebia medusa</i>		T		S	P			
	subspecies	<i>Erebia medusa hippomedusa</i>		T/M	R		P	SP		

	Common name	Scientific name	July							
			2	3	4	5	6	7	8	9
34	Dewy Ringlet	<i>Erebia pandrose</i>				S				
35	Meadow Brown	<i>Maniola jurtina</i>		T						
36	Ringlet	<i>Aphantopus hyperantus</i>							E	
37	Small Heath	<i>Coenonympha pamphilus</i>		T/M	R		Pr	SP		
38	Pearly Heath	<i>Coenonympha arcania</i>					Pr			
39	Alpine Heath	<i>Coenonympha gardetta</i>			R	S		SP		
40	Speckled Wood	<i>Pararge aegeria</i>		T						
41	Large Wall Brown	<i>Lasiommata maera</i>		T				SP		
42	Grizzled Skipper	<i>Pyrgus malvae</i>					P			
43	Olive Skipper	<i>Pyrgus serratulae</i>						SP		
44	Alpine Grizzled Skipper	<i>Pyrgus andromedae</i>					P			
45	Dusky Grizzled Skipper	<i>Pyrgus cacaliae</i>		M						
46	Dingy Skipper	<i>Erynnis tages</i>		M	R					
47	Small Skipper	<i>Thymelicus sylvestris</i>					Pr		E	
48	Large Skipper	<i>Ochlodes venatus</i>					Pr			

Micro Moths [T = trap, F = field]

1	Argyresthia family	<i>Argyresthia bonnetella</i>					T	T	T	
2	Diamond-backed Moth	<i>Plutella xylostella</i>			T	T	T			
3	Coleophorid family	<i>Coleophora lixella</i>						F		
4	Tortrix family	<i>Pseudargyrotoza conwagana</i>			T					F
5	Light Grey Tortrix	<i>Cnephasia incertana</i>						T		
6	Marbled Orchard Tortrix	<i>Hedya nubiferana</i>					T			
7	Tortrix family	<i>Apotomis turbidana</i>			T					
8	Tortrix family	<i>Epiblema scutulana</i>			T					
9	Tortrix family	<i>Epiblema cirsiiana</i>					T			
10	Tortrix family	<i>Pammene populana</i>					F			
11	Crambid family	<i>Crambus lathoniellus</i>								T
12	Crambid family	<i>Crambus perlella</i>		F	F		F	F	T/F	
13	Crambid family	<i>Catoptria permutatellus</i>					T		T	
14	Crambid family	<i>Catoptria pinella</i>						F		
15	Crambid family	<i>Catoptria margaritella</i>					F			
16	Crambid family	<i>Scoparia pyralella</i>						T		
17	Crambid family	<i>Pyrausta nigrata</i>				F				
18	Crambid family	<i>Anania lancealis</i>							F	
19	Crambid family	<i>Udea prunalis</i>				T				
20	Crambid family	<i>Udea olivalis</i>								T
21	Crambid family	<i>Udea uliginosalis</i>			F					
22	Rusty-dot Pearl	<i>Udea ferrugalis</i>					F	T		
23	Mother of Pearl	<i>Pleuroptya ruralis</i>					T			
24	Spruce Cone Worm	<i>Dioryctria abietella</i>			T		T			
25	Pyralid	<i>Dioryctria sylvestrella</i>			T	T	T			
26	Tringle Plume	<i>Platyptilia gonodactyla</i>		F						
27	Thyme Plume	<i>Merrifieldia leucodactyla</i>						T		

Macro Moths

1	Ghost Moth	<i>Hepialus humuli humuli</i>							F	
2	Goat Moth	<i>Cossus cossus</i>								F
3	Forester	<i>Adscita statices</i>					F			
4	Six-spot Burnet	<i>Zygaena filipendulae</i>		F			F		F	
5	Five-spot Burnet	<i>Zygaena trifolii</i>				F	F		F	

	Common name	Scientific name	July							
			2	3	4	5	6	7	8	9
6	Transparent Burnet	<i>Zygaena purpuralis</i>		F				F		
7	Grass Eggar	<i>Lasiocampa trifolii</i>			F					
8	Pine-tree Lappet	<i>Dendrolimus pini</i>			T	T	T	T		
9	Peach Blossom	<i>Thyatira batis</i>					T			
10	Small Fan-footed Wave	<i>Idaea biselata</i>								T
11	Weaver's Wave	<i>Idaea contiguaria</i>					T			
12	Silver-ground Carpet	<i>Xanthorhoe montanata</i>		F	T/F	T/F	T	T/F	T/F	T
13	Shaded Broad-bar	<i>Scotopteryx chenopodiata</i>							F	
14	Small Argent and Sable	<i>Epirrhoe tristata</i>			F			F		
15	Galium Carpet	<i>Epirrhoe galiata</i>				T				
16	Yellow-ringed Carpet	<i>Entephria flavicinctata</i>			T					
17	Grey Mountain Carpet	<i>Entephria caesiata</i>			T			T		
18	Beautiful Carpet	<i>Mesoleuca albicillata</i>				T		T		
19	Purple Bar	<i>Cosmorhoe ocellata</i>					T			
20	Small Phoenix	<i>Ecliptopera silaceata</i>				T	T		T	
21	Red-green Carpet	<i>Chloroclysta siterata</i>						T		
22	Dark Marbled Carpet	<i>Chloroclysta citrata citrata</i>					T		T	T
23	Common Marbled Carpet	<i>Chloroclysta truncata</i>			T	T				
24	Blue-bordered Carpet	<i>Plemyra rubiginata rubiginata</i>							T	
25	Pine Carpet	<i>Thera firmata</i>						T		
26	Spruce Carpet	<i>Thera britannica</i>			T				T	
27	Broken-barred Carpet	<i>Electrophaes corylata</i>			T	T	T	T	T	
28	May Highflyer	<i>Hydriomena impluviata</i>					T	T		
29	Fern	<i>Horisme tersata</i>			T	T	T		T	F
30	Barberry Carpet	<i>Pareulype berberata</i>						T	T	
31	Argent and Sable	<i>Rheumaptera hastata</i>			F		F			
32	Scallop Shell	<i>Rheumaptera undulata</i>					T			
33	Barred Carpet	<i>Perizoma taeniata</i>					T	T		
34	Rivulet	<i>Perizoma affinitata</i>				T	T			
35	Small Rivulet	<i>Perizoma alchemillata</i>				T	T	T		
36	Pretty Pinion	<i>Perizoma blandiata</i>			F	T				
37	Grass Rivulet	<i>Perizoma albulata</i>		F	T/F			F		
38	Cloaked Pug	<i>Eupithecia abietaria</i>			T			T	T	
39	Freyer's Pug	<i>Eupithecia intricata</i>			T	T			T	T
40	Tawny-speckled Pug	<i>Eupithecia icterata</i>				T				
41	Larch Pug	<i>Eupithecia lariciata</i>		T	T	T	T	T	T	T
42	Dwarf Pug	<i>Eupithecia tantillaria</i>			T					
43	Purple Treble-bar	<i>Aplocera praeformata</i>			T	T				
44	Chimney Sweeper	<i>Odezia atrata</i>		F	F			F	F	F
45	Clouded Border	<i>Lomaspilis marginata</i>			T	T	T	T	T	
46	Tawny-barred Angle	<i>Macararia liturata</i>			T	T	T	T	T	T
47	Latticed Heath	<i>Chiasma clathrata clathrata</i>		F	T/F			F	T/F	
48	Brimstone Moth	<i>Opistograptis luteolata</i>			T	T	T			
49	Speckled Yellow	<i>Pseudopanthera macularia</i>		F			F	F		
50	Scalloped Hazel	<i>Odontopera bidentata</i>			T	T	T	T	T	
51	Peppered Moth	<i>Biston betularia</i>		T	T	T	T	T		
52	Peppered Moth	<i>Biston betularia f. insularia</i>				T	T	T		
53	Mottled Beauty	<i>Alcis repandata repandata</i>				T	T			
54	Common Heath	<i>Ematurga atomaria</i>			F			F	F	
55	Common White Wave	<i>Cabera pusaria</i>		F						
56	Common Wave	<i>Cabera exanthemata</i>			T			T	T/F	T/F

	Common name	Scientific name	July							
			2	3	4	5	6	7	8	9
57	Light Emerald	<i>Campaea margaritata</i>				T				
58	Barred Red (green form)	<i>Hylaea fasciara prasinaria</i>				T	T	T	T	
59	Scotch Annulet	<i>Gnophos obfuscatus</i>		F						
60	Unnamed Geometrid	<i>Clarissa pullata</i>								T
61	Unnamed Geometrid	<i>Clarissa ambiguata</i>					T			
62	Unnamed Geometrid	<i>Clarissa glaucinaria</i>			T					
63	Unnamed Geometrid	<i>Elophos vittaria mendicaria</i>				T				
64	Black Mountain Moth	<i>Glacies coracina</i>			F	F		F		
65	Yellow Banded	<i>Psodos quadriferia</i>			F	F				
66	Pine Hawk-moth	<i>Hyloicus pinastri</i>			T	T	T	T	T	T
67	Hummingbird Hawk-moth	<i>Macroglossum stellatarum</i>		F						
68	Small Elephant Hawk-moth	<i>Deilephila porcellus</i>						T		
69	Poplar Kitten	<i>Fircula bifida</i>				T				
70	Pebble Prominent	<i>Notodonta ziczac</i>				T				
71	Lesser Swallow Prominent	<i>Pheosia gnoma</i>					T			
72	Coxcomb Prominent	<i>Ptilodon capucina</i>			T		T	T	T	
73	Small Chocolate-tip	<i>Clostera pigra</i>			T			T		
74	Red-necked Footman	<i>Atolmis rubricolis</i>				T	F	T		
75	Common Footman	<i>Eilema lurideola</i>							T	
76	Clouded Buff	<i>Diacrisia sannio</i>			T	T	T	T	T	
77	Nine Spotted	<i>Amata phegea</i>					F			F
78	Heart and Club	<i>Agrotis clavis</i>					T			
79	Heart and Dart	<i>Agrostis exclamationis</i>				T	T	T	T	
80	Large Yellow Underwing	<i>Noctua pronuba</i>			T	T	T	T	T	
81	Lesser Yellow Underwing	<i>Noctua comes</i>					T	T		
82	Broad-bordered Yellow Underwing	<i>Noctua fimbriata</i>			T	T	T	T	T	
83	True Lover's Knot	<i>Locophotia porphyrea</i>			T	T	T	T	T	
84	Ingrailed Clay	<i>Diarsia mendica</i>				T		T	T	
85	Setacious Hebrew Character	<i>Xestia c-nigrum</i>			T					
86	Unnamed Noctuid	<i>Xestia viridescens</i>				T	T	T		
87	Gothic	<i>Naenia typica</i>			T	T				
88	Great Brocade	<i>Eurios occulta</i>		T	T	T	T	T	T	T
89	Green Arches	<i>Anaplectoides prasina</i>			T	T	T	T	T	
90	Shears	<i>Hada plejeba</i>			T		T	T	T	
91	Dot Moth	<i>Melanchra persicariae</i>							T	
92	Beautiful Brocade	<i>Lacanoba contigua</i>			T			T		T
93	Pale-shouldered Brocade	<i>Lacanobia thalassina</i>			T	T			T	T
94	Glaucous Shears	<i>Papestra biren</i>				T	T	T	T	
95	Broom Moth	<i>Melandra pisi</i>		T	T	T	T			T
96	Clay	<i>Mythimna ferrago</i>					T			
97	Delicate	<i>Mythimna vitellina</i>				T				
98	Shoulder-striped Wainscot	<i>Mythimna comma</i>		F				T		
99	Shark	<i>Cucullia umbratica</i>				T	T	T		
100	Beautiful Arches	<i>Blepharita satura</i>			T		T			
101	Dark Brocade	<i>Bepharita adusta</i>				T		T	T	
102	Flounced Chestnut	<i>Agrochola helvola</i>					T			
103	Poplar Grey	<i>Acrionicta megacephala</i>							T	
104	Alder Moth	<i>Acrionicta alni</i>				T	T			
105	Brown Rustic	<i>Rusina ferruginea</i>				T	T	T	T	
106	Small Angle Shades	<i>Euplexia lucipara</i>				T				
107	Dun-bar	<i>Cosmia trapezina</i>					T			

	Common name	Scientific name	July							
			2	3	4	5	6	7	8	9
108	Saxon	<i>Hyppa rectilinea</i>			T	T	T	T	T	
109	Dark Arches	<i>Apamea monoglypha</i>			T	T	T	T	T	
110	Reddish Light Arches	<i>Apamea sublustris</i>			T	T	T	T	T	
111	Clouded Bordered Brindle	<i>Apamea crenata</i>		F	T	T	T	T	T	
112	Marbled Minor agg.	<i>Oligia strigilis (Complex)</i>			T	T	T	T	T	
113	Uncertain	<i>Hoplodrina alsines</i>			T	T	T	T	T	
114	Rustic	<i>Hoplodrina blanda</i>			T			T	T	
115	Burnished Brass	<i>Diachrysis chrysitis</i>				T	T	T		
116	Purple-shaded Gem	<i>Euchalcia variabilis</i>								T
117	Silver Y	<i>Autographa gamma</i>			T/F		F	T/F		
118	Beautiful Golden Y	<i>Autographa pulchrina</i>			T					
119	Gold Spangle	<i>Autographa bractea</i>			T					
120	Scarce Silver Y	<i>Syngrapha interregotianis</i>						T		
121	Alpine Y	<i>Syngrapha devergens</i>			T	T	T		T	
122	Spectacle	<i>Abrostola tripartita</i>		T						
123	Burnet Companion	<i>Euclidia glyphica</i>		F	F		F	F		
124	Small Purple-barred	<i>Phymetra viridaria</i>		F	F			F		
125	Beautiful Snout	<i>Hypena crassalis</i>					T			
126	Unnamed Noctuid	<i>Panthea coenobita</i>			T			T		

Birds (H = heard only; ✓ = recorded but not counted)

1	Common Pheasant	<i>Phasianus colchicus</i>								✓
2	Mallard	<i>Anas platyrhynchos</i>					✓	✓		✓
3	Western Cattle Egret	<i>Bubulcus ibis</i>	✓				✓			
4	Eurasian Sparrowhawk	<i>Accipiter nisus</i>					✓			
5	Common Buzzard	<i>Buteo buteo</i>			✓		✓	H		
6	Common Kestrel	<i>Falco tinnunculus</i>				✓		✓		
7	Eurasian Coot	<i>Fulica atra</i>								✓
8	Yellow-legged Gull	<i>Larus michahellis</i>	✓							
9	(Feral) Rock Dove	<i>Columba livia</i>	✓							✓
10	Common Wood Pigeon	<i>Columba palumbus</i>	✓							✓
11	Eurasian Collared Dove	<i>Streptopelia decaocto</i>	✓							✓
12	Alpine Swift	<i>Tachymartus melba</i>	✓	✓	✓	✓				
13	Common Swift	<i>Apus apus</i>	✓	✓	✓	✓	✓	✓	✓	✓
14	Great Spotted Woodpecker	<i>Dendrocopos major</i>		H	H		H			
15	Black Woodpecker	<i>Dryocopus martius</i>			H			H		
16	European Green Woodpecker	<i>Picus viridis</i>			H			✓	H	✓
17	Red-backed Shrike	<i>Lanius collurio</i>						✓		✓
18	Eurasian Jay	<i>Garrulus glandarius</i>								✓
19	Eurasian Magpie	<i>Pica pica</i>	✓	✓	✓	✓	✓	✓	✓	✓
20	Spotted Nutcracker	<i>Nucifraga caryocatactes</i>		✓		✓	✓	✓	✓	
21	Alpine Chough	<i>Pyrrhocorax graculus</i>				✓				
22	Carrion Crow	<i>Corvus corone</i>		✓	✓	✓	✓	✓	✓	✓
23	Hooded Crow	<i>Corvus cornix</i>	✓				✓			✓
24	Northern Raven	<i>Corvus corax</i>			H	H		✓		
25	Marsh Tit	<i>Poecile palustris</i>						H	H	✓
26	Willow Tit	<i>Poecile montanus</i>		H	H	H	H	✓		
27	Coal Tit	<i>Parus ater</i>		H	✓		H		H	✓
28	European Crested Tit	<i>Lophophanes cristatus</i>		H	✓	H	✓	✓		
29	Great Tit	<i>Parus major</i>		✓	✓		✓	✓	✓	✓
30	Eurasian Blue Tit	<i>Cyanistes caeruleus</i>		H	✓		H		✓	

	Common name	Scientific name	July								
			2	3	4	5	6	7	8	9	
31	Barn Swallow	<i>Hirundo rustica</i>	✓	✓	✓	✓	✓	✓	✓	✓	
32	Sand Martin	<i>Riparia riparia</i>			✓						
33	Eurasian Crag Martin	<i>Ptyonoprogne rupestris</i>		✓	✓		✓	✓	✓	✓	
34	Common House Martin	<i>Delichon urbicum</i>	✓	✓	✓	✓	✓	✓	✓	✓	
35	Long-tailed Tit	<i>Aegithalos caudatus</i>							✓		
36	Marsh Warbler	<i>Acrocephalus palustris</i>								✓	
37	Willow Warbler	<i>Phylloscopus trochilus</i>		H							
38	Wood Warbler	<i>Phylloscopus sibilatrix</i>			H						
39	Common Chiffchaff	<i>Phylloscopus collybita</i>		H	H	H	H	✓	H	H	
40	Western Bonelli's Warbler	<i>Phylloscopus bonelli</i>		✓	✓						
41	Eurasian Blackcap	<i>Sylvia atricapilla</i>		H	H		H	H	✓	✓	
42	Lesser Whitethroat	<i>Sylvia curruca</i>			H	H		H			
43	Common Whitethroat	<i>Sylvia communis</i>				H					
44	Common Firecrest	<i>Regulus ignicapilla</i>								H	
45	Goldcrest	<i>Regulus regulus</i>		H			H				
46	Eurasian Wren	<i>Troglodytes troglodytes</i>		H	H	H	H	H	✓		
47	Eurasian Nuthatch	<i>Sitta europaea</i>		✓	✓		H				
48	Eurasian Treecreeper	<i>Certhia familiaris</i>		✓					✓		
49	Common Starling	<i>Sturnus vulgaris</i>	✓							✓	
50	Ring Ouzel	<i>Turdus torquatus</i>				✓					
51	Common Blackbird	<i>Turdus merula</i>	✓	H	✓		✓	✓	✓	✓	
52	Fieldfare	<i>Turdus pilaris</i>				✓	✓	✓	✓		
53	Song Thrush	<i>Turdus philomelos</i>		H	H		✓		✓		
54	Mistle Thrush	<i>Turdus viscivorus</i>		✓		✓	✓	✓	✓	✓	
55	European Robin	<i>Erithacus rubecula</i>			H				H	H	
56	Black Redstart	<i>Phoenicurus ochruros</i>		✓	✓	✓	✓	✓	✓	✓	
57	Common Redstart	<i>Phoenicurus phoenicurus</i>			H			✓			
58	Whinchat	<i>Saxicola rubetra</i>								✓	
59	Northern Wheatear	<i>Oenanthe oenanthe</i>				✓					
60	Spotted Flycatcher	<i>Muscicapa striata</i>			✓		✓		✓	✓	
61	White-throated Dipper	<i>Cinclus cinclus</i>		✓			✓			✓	
62	House Sparrow	<i>Passer domesticus</i>		✓	✓	✓	✓	✓	✓	✓	
63	Italian House Sparrow	<i>Passer domesticus italiae</i>	✓	✓	✓	✓	✓	✓	✓	✓	
64	White-winged Snowfinch	<i>Montifringilla nivalis</i>				✓					
65	Dunnock	<i>Prunella modularis</i>		H			H		H		
66	Grey Wagtail	<i>Motacilla cinerea</i>		✓			✓	✓	✓	✓	
67	White Wagtail	<i>Motacilla alba alba</i>	✓	✓	✓	✓	✓	✓	✓	✓	
68	Tree Pipit	<i>Anthus trivialis</i>		✓	✓		✓	✓			
69	Water Pipit	<i>Anthus spinoletta</i>				✓					
70	Common Chaffinch	<i>Fringilla coelebs</i>		✓		✓	✓	✓	✓	✓	
71	European Serin	<i>Serinus serinus</i>		✓			✓	H	H	H	
72	European Greenfinch	<i>Carduelis chloris</i>					✓	✓	H	H	
73	Eurasian Siskin	<i>Carduelis spinus</i>		H				✓			
74	European Goldfinch	<i>Carduelis carduelis</i>		✓	✓	✓	✓	✓	✓	✓	
75	Common Redpoll	<i>Carduelis flammea</i>						✓			
76	Lesser Redpoll	<i>Carduelis flammea cabaret</i>			H	✓					
77	Common Linnet	<i>Carduelis cannabina</i>			✓	✓	✓	✓			
78	Red Crossbill	<i>Loxia curvirostra</i>		H	✓		✓	H			
79	Eurasian Bullfinch	<i>Pyrrhula pyrrhula</i>					H	H	H		
80	Yellowhammer	<i>Emberiza citrinella</i>						✓	✓		

	Common name	Scientific name	July								
			2	3	4	5	6	7	8	9	

Mammals

1	Alpine Marmot	<i>Marmota marmota</i>				✓				
2	Red Squirrel	<i>Sciurus vulgaris</i>							✓	✓
3	Red Deer	<i>Cervus elaphus</i>					✓			
4	European Roe Deer	<i>Capreolus capreolus</i>		✓					✓	
5	Alpine Chamois	<i>Rupicapra rupicapra</i>			✓					

Reptiles & amphibians

1	Common Frog	<i>Rana temporaria</i>							✓	
2	Common Wall Lizard	<i>Podarcis muralis</i>		✓	✓	✓				
3	Smooth Snake	<i>Coronella austriaca</i>					✓			
4	Adder	<i>Vipera berus</i>				✓				

Grasshoppers and Crickets

1	Dark Bush-cricket	<i>Pholidoptera griseoaptera</i>					✓			
2	Wart-biter	<i>Decticus verrucivorus</i>					✓			
3	Great Green Bush-cricket	<i>Tettigonia viridissima</i>							✓	
4	Long-winged Cone-head	<i>Conocephalus discolor</i>					✓			

Shield Bugs

1	Forest Bug	<i>Pentatoma rufipes</i>		✓			✓			
2	(black/red striped)	<i>Graphosoma lineatum</i> (G. italicum)							✓	

Ground Bugs

1	(red/black)	<i>Lygaeus saxatilis</i>					✓			
---	-------------	--------------------------	--	--	--	--	---	--	--	--

Mirid Bugs

1	Green Mirid	<i>Orthotylus virescens</i>					✓			
---	-------------	-----------------------------	--	--	--	--	---	--	--	--

Water Bugs

1	Common Pond Skater	<i>Gerris lacustris</i>								✓
---	--------------------	-------------------------	--	--	--	--	--	--	--	---

Scorpion Flies

1	Scorpion Fly	<i>Panorpa meridionalis</i>		✓	✓		✓	✓		
---	--------------	-----------------------------	--	---	---	--	---	---	--	--

Robber-flies

1	Robber-fly	<i>Asilid Sp.</i>							✓	
---	------------	-------------------	--	--	--	--	--	--	---	--

Other Flies

1	Cleg-fly	<i>Haematopota pluvialis</i>		✓		✓		✓		
2	Stonefly	<i>Perlodes microcephala</i>			✓					

Ichneumons

1	(red)	<i>Ophion luteus</i>			✓	✓		✓	✓	
---	-------	----------------------	--	--	---	---	--	---	---	--

Ants

1	Wood Ant	<i>Formica rufa</i>		✓	✓	✓	✓	✓	✓	
---	----------	---------------------	--	---	---	---	---	---	---	--

	Common name	Scientific name	July						
			2	3	4	5	6	7	8

Wasps

1	Common Wasp	<i>Vespula vulgaris</i>					✓			
2	Norwegian Wasp									✓
3	European Paper Wasp	<i>Polistes dominula</i>							Nest	

Bees

1	Carpenter Bee	<i>Xylocopa violacea</i>		✓						
2	Honey Bee	<i>Apis mellifera</i>		✓	✓	✓	✓	✓		
3	White-tailed Bumblebee	<i>Bombus lucorum</i>							✓	
4	Buff-tailed Bumblebee	<i>Bombus terrestris</i>			✓	✓	✓	✓		✓
5	Red-tailed Bumblebee	<i>Bombus lapidarius</i>			✓	✓				
6	Common Carder-bee	<i>Bombus pascuorum</i>		✓						

Ground Beetles

1	Brown Tiger Beetle	<i>Cicindela sp.</i>		✓						
2	Dor Beetle	<i>Geotrupes typhoeus</i>							✓	
4	Common Ground Beetle								✓	

Chafers

1	Garden Chafer	<i>Phyllopertha horticola</i>		✓			✓			
2	Bee Beetle	<i>Trichius fasciatus</i>					✓			
3	Cockchafer	<i>Melolontha melolontha</i>			✓					
4	(metallic blue)	<i>Hoplia caerulea</i>		✓	✓	✓				

Soldier Beetles

1	(black/red head)	<i>Cantharis rustica</i>					✓			
2	Common Red Soldier Beetle	<i>Rhagonycha fulva</i>							✓	
3	Clerid family	<i>Trichodes apiaris</i>					✓			

Ladybirds

1	7-spot Ladybird	<i>Coccinella 7-punctata</i>							✓	
2	Cream-spot Ladybird	<i>Calvia 14-guttata</i>				✓				

Longhorn Beetles

1	(yellow/black)	<i>Strangalia maculata</i>					✓			
---	----------------	----------------------------	--	--	--	--	---	--	--	--

Spiders

1	Crab Spider	<i>Misumena vatia</i>							✓	
2	Harvestman					✓				✓

Other Taxa

1	Roman Snail	<i>Helix pomatia</i>					✓		✓	
---	-------------	----------------------	--	--	--	--	---	--	---	--

Plants

Scientific Name	Common Name	Notes
GYMNOSPERMS		
Cupressaceae		
<i>Juniperus communis</i>	Common Juniper	Tamion
Pinaceae		
<i>Larix deciduas</i>	European Larch	Tamion
<i>Picea abies</i> subsp. <i>Abies</i>	Spruce	Gardeccia
<i>Pinus mugo</i>	Dwarf Mountain Pine	Tamion
<i>Pinus nigra</i> subsp. <i>Nigra</i>	Austrian or Black Pine	Tamion
ANGIOSPERMS		
Eu-dicots		
Asteraceae		
<i>Antennaria dioica</i>	Cat's-foot	Tamion
<i>Arnica montana</i>	Arnica	Tamion
<i>Aster alpines</i>	Alpine Aster	Passo de Sella
<i>Bellidiastrum michelii</i> (<i>Aster bellidiastrum</i>)	False Aster	Tamion
<i>Bupthalmum salicifolium</i>	Yellow Oxeye	Tamion
<i>Centaurea pseudophrygia</i>	Wig Knapweed	Tamion
<i>Cirsium erisithales</i>	Yellow Melancholy Thistle	Tamion
<i>Cirsium heterophyllum</i>	Melancholy Thistle	Tamion
<i>Crepis aurea</i>	Golden Hawk's-beard	Tamion
<i>Homogyne alpine</i>	Alpine Colt's-foot	Tamion
<i>Hypochaeris uniflora</i>	Giant Cat's-ear	Tamion
<i>Leontopodium alpinum</i>	Edelweiss	Passo de Sella
<i>Leucanthemum vulgare</i>	Ox-eye daisy	Tamion
<i>Petasites alba</i>	White Butterbur	Gardeccia
Balsaminaceae		
<i>Impatiens parviflora</i>	Small-flowered Balsam	S of Ponta Nova
Berberidaceae		
<i>Berberis vulgaris</i>	Barberry	Tamion
Boraginaceae		
<i>Myosotis alpestris</i>	Alpine Wood Forget-me-not	Passo de Sella
Brassicaceae		
<i>Arabis alpina</i> subsp. <i>caucasica</i>	Alpine Rock-cress	Gardeccia
<i>Biscutella laevigata</i>	Buckler Mustard	Tamion
<i>Cardamine amara</i>	Large Bitter-cress	Paneveggio
Campanulaceae		
<i>Campanula barbata</i>	Bearded Bellflower	Tamion
<i>Campanula rotundifolia</i>	Harebell	S of Ponta Nova
<i>Campanula scheuchzeri</i>	A Harebell	Tamion
<i>Phyteuma nigra</i>	Black Rampion	Passo de San Pelligrino
<i>Phyteuma orbiculare</i>	Round-headed Rampion	Tamion
<i>Phyteuma sieberi</i>	a Rampion	Passo de Sella
CONIFERS		
Juniper Family		
Pine Family		
FLOWERING PLANTS		
True Dicotyledons		
Daisy Family		
Balsam Family		
Barberry Family		
Forget-me-not Family		
Cabbage Family		
Bellflower Family		

Caryophyllaceae

Arenaria ciliate
Cerastium uniflorum
Silene acaulis
Stellaria nemorum

Ericaceae

Kalmia procumbens
Rhododendron ferrugineum
Rhododendron hirsutum
Moneses uniflora

Fabaceae

Astragalus alpines
Oxytropis campestris
Trifolium badium

Geraniaceae

Geranium sylvaticum

Lamiaceae

Ajuga pyramidalis
Clinopodium (Acinos) alpinum
Horminum pyrenaicum
Lamiaeum galeobdolon
Prunella grandiflora
Salvia pratensis

Lentibulariaceae

Pinguicula alpina

Orobanchaceae

Pedicularis rostratocapitata

Papaveraceae

Papaver aurantiacum (P. rhaeticum)

Polygonaceae

Persicaria vivipara
Rumex alpines

Primulaceae

Androsace obtusifolia
Primula farinose

Ranunculaceae

Aconitum lycoctonum subsp. vulparia
Anemone baldense
Clematis vitalba
Pulsatilla alpina subsp. apiifolia

Rosaceae

Dryas octopetala
Geum rivale

Pink Family

Ciliate Sandwort
 Glacier Mouse-ear
 Moss Campion
 Wood Stitchwort

Heather Family

Trailing Azalea
 Alpenrose
 Hairy Alpenrose
 One-flowered Wintergreen

Pea Family

Alpine Milk-vetch
 Yellow Milk-vetch
 Brown Clover

Crane's-bill Family

Wood Crane's-bill

Dead-nettle Family

Pyramidal Bugle
 Alpine Basil Thyme
 Dragonmouth
 Yellow Archangel
 Large Self-heal
 Meadow Clary

Bladderwort Family

Alpine Butterwort

Broomrape Family

Beaked Lousewort

Poppy Family

Rhaetian Poppy

Knotweed Family

Alpine Bistort
 Monk's Rhubarb

Primrose Family

Blunt-leaved Rock-jasmine
 Bird's-eye Primrose

Buttercup Family

Wolf's-bane
 Monte Baldo Anemone
 Old Man's Beard
 Yellow Alpine Pasque Flower

Rose Family

Mountain Avens
 Water Avens

Gardeccia
 Paneveggio
 Gardeccia
 Paneveggio

Passo de Sella
 Gardeccia
 Gardeccia
 Tamion

Val de Monzoni
 Passo de San Pelligrino
 Paneveggio

Gardeccia

Paneveggio
 Gardeccia
 Gardeccia
 S of Ponta Nova
 Passo de San Pelligrino
 Tamion

Gardeccia

Passo de Sella

Paneveggio

Gardeccia
 Paneveggio

Passo de Sella
 Paneveggio

Passo de San Pelligrino
 Passo de Sella
 S of Ponta Nova
 Passo de Sella

Gardeccia
 Paneveggio

Potentilla nitida
Sorbus chamaemespilus

Pink Cinquefoil
False Medlar

Passo de Sella
Gardeccia

Saxifragaceae

Saxifraga aizoides
Saxifraga paniculata

Saxifrage Family

Yellow Mountain Saxifrage
Live-long Saxifrage

Paneveggio
Passo de Sella

Thymelaeaceae

Daphne striata

Daphne Family

a Daphne

Gardeccia

Monocots**Juncaceae**

Luzula luzuloides

Rush Family

White Woodrush

Gardeccia

Liliaceae

Lillium Martagon

Lily Family

Martagon Lily

Passo de San Pelligrino

Orchidaceae

Coeloglossum viride
Corallorhiza trifida
Dactylorhiza alpestris
Dactylorhiza majalis
Gymnadenia albida
Gymnadenia austriaca
Gymnadenia conopsea agg.
Gymnadenia rhellicani
Gymnadenia rubra
Platanthera bifolia
Traunsteinera globosa

Orchid Family

Frog Orchid
Coralroot Orchid
Alpine Broad-leaved Marsh Orchid
Broad-leaved Marsh Orchid
Small White Orchid
Austrian Vanilla Orchid
Fragrant Orchid
Dark Vanilla Orchid
Red Vanilla Orchid
Lesser Butterfly Orchid
Round-headed Orchid

Gardeccia
Val de Monzoni
Paneveggio
Paneveggio
Gardeccia
Paneveggio
Passo de San Pelligrino
Paneveggio
Passo de Sella
Passo de San Pelligrino
Tamion

Tofieldiaceae

Tofieldia calyculata

Scottish Asphodel Family

Tofield's Asphodel

Paneveggio



Glaucous Shears - Ian Tulloch