

The Cevennes - A Butterfly Tour

Naturetrek Tour Report

14 - 21 June 2012



2012 Naturetrek Cevennes Butterfly Group



Oberthur's Grizzled Skipper



Safflower Skipper



Tarn Gorge near les Vignes

Report and images compiled by Mark Galliot



Naturetrek Cheriton Mill Cheriton Alresford Hampshire SO24 0NG England

T: +44 (0)1962 733051

F: +44 (0)1962 736426

E: info@naturetrek.co.uk

W: www.naturetrek.co.uk

Tour Leader: Mark Galliot Naturetrek Naturalist

Participants: Peter Dare
Gillian Dare
Chrissy Marshall
Hazel Rouse

Day 1

Thursday 14th June

Warm and sunny

The flight was a little late into Montpellier as Mark, who lives in France, met the rest of the group after they had retrieved their baggage. Then quickly loading up the minibus we were soon on our way on to the autoroute, before turning off and skirting Montpellier by means of the new by-pass. As we started to climb up onto the scenic Corniche des Cevennes, wonderful views started to unfold on both sides of the road, with Mont Lozere to the north and Mont Aigoual to the south west. We then descended to Florac, crossing the River Tarnon and skirted the town past the old railway station before turning onto the road to Cocurès, our base for the week. As we arrived at the hotel, la Lozerette, Pierette was there to greet us, and we were quickly allocated our rooms, before enjoying the first of the week's very good dinners. In the meantime some of the group saw their first raptor of the week when a Short-toed Eagle flew low over the hotel.

Day 2

Friday 15th June

Hot and sunny

We awoke to a clear blue sky and after breakfast left the hotel to follow the River Tarn down to the main road, and then turning left into the spectacular gorge gouged out of the limestone by the river over many eons of time. We made a brief stop at Pont Ispagnac, before continuing along the valley and crossing the river again on a narrow pontoon bridge to the old village of Castelbouc, seemingly built around a large outcrop below the high limestone cliffs. Here we found some of the special plants that have made the rocks and cliffs their home, including Maidenhair Fern-*Adiantum capillus-veneris*, Blue Lettuce-*Lactuca perennis*, Rock Soapwort-*Saponaria ocyroides*, Peach-leaved Bellflower-*Campanula persicifolia* and the endemic Cevennes Saxifrage-*Saxifraga cebennensis*.

We then walked along a pleasant path through some abandoned terraces finding our first butterflies of the week, Black-veined White, Little & Osiris Blue, Knapweed Fritillary, Orange Tip, Safflower Skipper and a Speckled Wood, the bright orange of this Southern European variant almost being confused as another Fritillary. Red Helleborine-*Cephalanthera rubra*, Pyramidal Orchid-*Anacamptis pyramidalis* and some Military Orchids-*Orchis militaris*, which were well past their best, were also enjoyed, while a handsome male Green Lizard showing off his blue throat was the first of many to be seen throughout our stay. Nightingales were also singing in the surrounding scrub along with the ubiquitous Cuckoo, the latter still common in France.

Continuing down to the picturesque small town of Ste Enimiè, we then took the road up onto the Causse Méjean, admiring the views as we climbed to take a late lunch at the Col de Copernac.

After enjoying our picnic meal, we explored the nearby Causse where we managed to identify many more butterflies, including Berger's & Common Clouded Yellow, Common, Adonis, & Turquoise Blues, Small & Pearly Heath, Heath Fritillary, a beautiful orange female Purple-shot Copper and the rare Esper's Marbled White, at a site where Mark had found a large colony on a previous tour. A flock of at least 20 Red-billed Choughs were ever present here, with Black Kite and our first Griffon Vulture overhead, while both Yellowhammer and Cirl Bunting songs were heard and compared. The attractive tall Feather Grass-*Stipa pennata*, blowing in the breeze gave the downland here a silver sheen, with colourful blooms such as False Sainfoin-*Vicia onobrychoides*, Golden Drop-*Onosma fastigiata*, White Flax-*Linum suffruticosum* and the brilliant yellow of Small Scorpion Vetch-*Coronilla minima* also carpeting the turf.

Before returning to the hotel over the plateau, we had time to have good close views of a male Red-backed Shrike and a more distant dashing Montagu's Harrier, before stopping at the view point overlooking Florac and Cocurès, and then descending by the zig-zag road back to the hotel

Day 3

Saturday 16th June

Hot and Sunny

With the weather being so settled, we decided today to head for the granite topped Mont Lozère, at 1699 metres, the highest point in the Cevennes, via the upper Tarn Valley and the old Camisard (protestant) village of Pont de Montvert. After stopping once in a lay-by, where Pearly Heath and the little blue Daisy-leaved Toadflax-*Anarrhinum bellidifolium* were the only things of note, we arrived at the village and had time for a quick exploration, while Mark bought the bread for our lunch. Continuing on up past the natural tree-line, we emerged into flowery upland meadows with the strange sickly aroma of the yellow Piorno Broom – *Cytisus purgans* permeating the clear mountain air. A stop here produced sheets of brilliant blue Mountain Pansy-*Viola lutea*, Star-of-Bethlehem-*Ornithogalum umbellatum*, Maiden Pink-*Dianthus deltoides*, the tall Yellow Gentian-*Gentiana lutea* in bud and were also lucky to see some Pheasant's Eye Narcissus-*Narcissus poetidus* still in flower. Butterflies here were Black-veined White, Small Tortoiseshell and Queen of Spain Fritillary, while Skylark, Woodlark, and a flock of Linnets were also noted.

Arriving at the Col de Finiels, we firstly walked along a sunny track through the pine plantations with plenty of butterflies on the wing, including more Small Tortoiseshell, Dingy Skipper, and both Small Pearl-bordered & Pearl-bordered Fritillaries, the latter being by far the more numerous of the two. Bullfinch, Crested Tit and Crossbill could all be heard calling through the trees, but unfortunately not located.

After a late picnic lunch, the rest of the afternoon was spent leisurely climbing to one of the two grassy "tors" that are located at the summit of Mont Lozere. Piedmont Ringlet and Green Hairstreak were both numerous and added to the list, while good plants were Alpine Clover-*Trifolium alpinum*, Heath-spotted Orchid-*Dactylorhiza maculata* and Mountain Everlasting-*Antennaria dioica*. Common Wheatear were frequent flitting around the rocks, Tree Pipits were everywhere, showing us their magnificent song flight, but the star bird here was a pair of Ring Ouzels, here evidently nesting in the adjacent pine trees. It was then back down to the hotel by the same route, but not before admiring another smart male Red-backed Shrike.

Day 4

Sunday 17th June

Very hot and sunny

Today, we drove the short distance up into the hills to the south-east of Florac, stopping firstly at St Laurent-de Trêves, where the dinosaur footprints in the exposed limestone rock (180 million years old) caused much discussion. Another female Purple-shot Copper put in an appearance, while at the parking area a nice male Serin delighted us, at the same time as overhead a pair of Short-toed Eagles were being mobbed by crows.

Continuing up higher onto the cause we stopped at the Col du Rey, a superb grassland site noted for its rich Orchid flora and insect fauna. We were not to be disappointed with Greater Butterfly-*Platanthera chlorantha*, Burnt-tip-*Neotinea ustulata*, Common Spotted-*Dactylorhiza fuchsii*, and some more magnificent Military Orchids, this time in full flower, with the endemic Cevennes Alpine Aster-*Aster alpinus ssp cebennensis* and the cream-flowered Cut-leaved Self Heal-*prunella laciniata* also being particularly conspicuous. Blues were the most numerous butterflies with Green-underside, Large, Escher's, Silver-studded, Mazarine, Adonis and Brown Argus all recorded along with Oberthur's Grizzled & Red-underwing Skipper and a single fast flying Cleopatra. Birds seen were Woodlark, Whitethroat, Yellowhammer, Raven, Buzzard and Melodious Warbler, with the strange whistling intro of a Black Woodpecker call also heard.

After taking our lunch here, we then drove on up to the nearby Col des Fesses for a circular walk through scrub, woodland and meadows. Almost immediately a Dark Green Fritillary circled a "lavogne" (a dew pond) hoping to partake of the salts left behind by the drying mud, followed by sightings of Meadow Fritillary and Holly Blue. White Helleborine-*Cephalanthera damasonium*, Dragon's Teeth-*Tetragonolobus maritimus* and a dried flower head of the Acanthus-leaved Carline Thistle-*Carlina acanthifolia* were admired, the latter being hung on the outside of the front doors in the local villages, reputedly to predict the onset of rain!

It was getting very hot now, so we then decided to drive back to a shady spot in a small valley near the hotel where Southern White Admiral and the large Niobe Fritillary were welcome additions, with Perennial Knawel-*Scleranthus perennis*, St Bernard's Lily-*Anthericum liliago* and an endemic Mignonette-*Reseda jacquini* also identified.

Day 5

Monday 18th June

Warm and Sunny am, showers pm

As the fine sunny weather was still holding firm, we decided to make for the other massif of Mont Aigoual, which lies to the south west of Florac, via the Col de Purjuret. Stopping at the latter, we managed to have fleeting views of a single Duke of Burgundy where normally it is common at the edge of the scrub here, this being probably due to recent heavy grazing by a flock of sheep. Another stop a little further on saw Yellow Gentian in full flower, with a Garden Warbler singing nearby.

Reaching the top car park next to the weather station on Mont Aigoual, the views were a bit hazy, but we were just about able to pick out the Alps to the east and the Pyrenees in the west, with the lagoons of the Mediterranean coast also visible to the south. We took a short walk here, adding Peacock, Grizzled Skipper and the alpine Mountain Ringlet to the butterfly list, with Tree Pipits again very numerous and a family of Black Redstarts, which had probably just fledged right next to the café, the avian interest.

We returned to the mini-bus only just in time, as a heavy thundery storm reached us from the west, so decided to drive down through the Beech forest on the other side of the mountain to the Lac de Bonheur, where we could eat our lunch on the picnic tables next to the lake.

Fortunately the storm had now passed over, so after lunch we headed for some nice meadows on the other side of the lake. En route, we were firstly intrigued by the comings and goings of a pair of Coal Tits which were nesting in a small hole in a wall, right next to the lake and secondly a pair of Grey Wagtails which were also probably nesting in the midst of an adjacent waterside bush. The meadows did not disappoint with Queen of Spain, Heath and Small Pearl-bordered Fritillaries, and Large, Silver-studded & Alcon Blues amongst other butterflies. The latter is becoming quite rare, restricted to bogs where its food-plant Marsh Gentian grows and was actually a “lifer” for Mark. Winged Broom-*Chamaespartium sagittale*, Field Gentian-*Gentianella campestris*, Burnt-tip Orchids, Fragrant-*Gymnadenea conopsea*, Broad-leaved Marsh Orchid-*Dactylorhiza majalis* and the rare Bug Orchid-*Anacamptis coriophora ssp fragrans* were the floral highlights here.

A final stop was made at Nimes le Vieux, a vast jumble of rocks and scrub where the dolomitic limestone rock has been eroded over time into fantastic shapes. As we walked up into the rocks here, we firstly heard the distinctive whip, whip-whip call of a Quail, and then disturbed a huge flock of at least 150 Red-billed Choughs, which took off and landed in the nearby fields. Almost simultaneously many Griffon Vultures could be seen landing on a prominent rock formation about half a mile away until there were over 30 birds crowded together for their evening “meeting”, before roosting on the cliffs of the gorge below. It was quickly realised that one very dark and slightly larger bird was none other than a Black Vulture, which are present here in small numbers and often tag along with the much more numerous Griffons.

Day 6

Tuesday 19th June

Sunny periods, then showers, warm

The overnight rain had lowered the temperatures somewhat, and the vegetation was quite damp as we headed westwards for the Causse Noir, one of the most westerly of the limestone plateaux. We drove up the zig-zag road out of Florac, across part of the Causse Méjean and then down into the pleasant town of Meyrueis, before climbing up on to the Causse Noir. The sky ahead now looked very dark and threatening and sure enough it started to rain as we neared the crossroads of la Pierre des Trois Évêques (the stone of three Bishops). Thankfully it soon passed, and we experienced sunny periods and showers for the rest of the day, although the moderate wind did not make for ideal conditions to search for butterflies.

Our first exploration near the village of Luc did though yield Marbled White, Berger’s Clouded Yellow and Escher’s, Adonis, Turquoise and Common Blue. Good plants here were Lesser Wintergreen-*Pyrola minor*, Bastard Toadflax-*Thesium divaricatum*, Narbonne Flax-*Linum narbonense* and the blue daisy-like *Catananthe caerulea*. Just before departing a male Montagu’s Harrier gave good views as he quartered the ground looking for prey, before being rudely interrupted by a stooping Peregrine Falcon, most likely trying to steal his prize!

We then drove further into the Causse to St André de-Vezines, where we took firstly a road which after a couple of miles continued as a track leading to another of the strange dolomite rock formations, this one called les Roquesaltes.

Surrounding the rocks here were some wonderful flowery meadows with Thyme Broomrape-*Orobanche alba*, the lovely blue *Aphyllanthes monspeliensis*, and the endemic Cevennes Pasque Flower-*Pulsatilla rubra var serotina* the highlights, but once again the wind and some intermittent rain rather kept the insects down out of sight in the vegetation. As earlier though, we did manage to find some butterflies amongst the grass, including more Turquoise Blues and two new species, a female Chapman's Blue and Large Grizzled Skipper. Crag Martins were circling the rocks here, while a pair of Bonelli's Warblers, feeding their fledglings, was a treat to watch.

The rain seemed to be now setting in for the rest of the afternoon, so we decided to return to the hotel via the Causse Méjean again, but not before having superb views of two female (or immature) Hen Harriers near the small airfield.

Day 7

Wednesday 20th June

Mist lifting, then sunny and hot

Today we were to spend the day exploring the western Causse Méjean, so after buying the bread for lunch, it was back up on to the Causse for our first stop at le Villaret, where the breeding programme of the wild Mongolian Przewalski's Horse is taking place. After admiring these handsome beasts, we explored the verges on the other side of the village where the already strong sun had encouraged both many Marbled Whites and to our joy also the much rarer Esper's Marbled White to be on the wing. A Hoopoe could also be heard calling in the valley below.

Two more stops near Rouveret and Lebouse, further west on the plateau, were also profitable with Safflower Skipper, another Purple-shot Copper, Queen of Spain, Meadow and Knapweed Fritillaries, while new species seen here were Scarce Swallowtail, Large wall and the distinctively deep orange Spotted Fritillary. Carthusian Pink-*Dianthus carthusianorum*, Bee Orchid-*Ophrys apifera* and Fragrant Orchid were noticeable plants, while Red-backed Shrike, Stonechat and a family of Ravens displaying just above our heads gave us some avian interest.

After a pleasant lunch, a short drive brought us to the ruined Chateau de Blanquefort, built amid a lofty jumble of huge dolomite cliffs, giving fabulous views looking down the Tarn Gorge towards Le Rozier. Almost immediately after we had stopped, Ilex & Blue-spot Hairstreak and Common Swallowtail were added to our list, whilst at the same time we could admire the Griffon Vultures as they glided along the ridge, with Black Kite, Peregrine Falcon and a Short-toed Eagle also noted. Good plants here were Pyrenean Bellflower-*Campanula speciosa*, Curry Plant-*Helichrysum stoechas*, the little white Peaflower-*Dorycnium pentaphyllum* and another endemic Valerian-*Centranthus lecoquii*.

We then descended the steep road to les Vignes, and down the valley to le Rozier where the Tarn and Jonte Rivers meet, before driving up the latter to reach the Causse again via another vertiginous route, and then back to the hotel for the last of our many splendid dinners.

Day 8

Thursday 21st June

Hot and sunny

An early start today for the drive back to Montpellier, so after saying our farewells to the hotel staff, we took the road through the Tarnon Valley and on up to cross over Mont Aigoual, before plunging down to the southern foothills of the Massif and the market town of Ganges.

Stopping near the Pic St Loup (a mountain), we could not but notice the cacophony of the many Cicadas, heralding our arrival back into Mediterranean France. In no time here, we had added 7 new species of butterfly to the list, these being False Ilex & Sloe Hairstreak, Bath & Wood White, Common & Great-banded Grayling and a single Painted Lady, with also the bonus of having our best views of Cleopatra and Spotted Fritillary. Bee-eater, Turtle Dove, Golden Oriole and both Sub-alpine & Orphean Warbler could all be heard, but unfortunately not glimpsed, while two colourful blooms were Pink Convolvulus-*Convolvulus cantabricus* and Narrow-leaved Jerusalem Sage-*Phlomis lychnitis*. After a quick sandwich lunch, it was now time to leave for the airport, all having agreed that it had been a very rewarding and enjoyable week in this lovely part of France.

Receive our e-newsletter

Join the Naturetrek e-mailing list and be the first to hear about new tours, additional departures and new dates, tour reports and special offers. Visit www.naturetrek.co.uk to sign up.

Naturetrek Facebook

We are delighted to launch the Naturetrek Facebook page so that participants of Naturetrek tours can remain in touch after the holiday and share photos, comments and future travel plans.

Setting up a personal profile at www.facebook.com is quick, free and easy. The [Naturetrek Facebook page](#) is now live; do please pay us a visit!



Esher's Blue

Species List

Plants

Scientific name	Common name
PTERIDOPHYTES	FERNS & ALLIES
Adiantaceae	Maidenhair fern Family
<i>Adiantum capillus-veneris</i>	Maidenhair Fern
Aspleniaceae	Spleenwort Family
<i>Asplenium adiantum-nigrum</i>	Black Spleenwort
<i>Asplenium foreziense</i>	Forez Spleenwort
<i>Asplenium ruta-muraria</i>	Wall Rue
<i>Asplenium septentrionale</i>	Forked Spleenwort
<i>Asplenium trichomanes</i>	Maidenhair Spleenwort
<i>Ceterach officinarum</i>	Rusty-back
Dennstaedtiaceae	Bracken Family
<i>Pteridium aquilinum</i>	Bracken
Polypodiaceae	Polypody Family
<i>Polypodium cambricum</i>	Southern Polypody
<i>Polypodium vulgare</i>	Common Polypody
Woodsiaceae	Lady Fern Family
<i>Athyrium filix-femina</i>	Lady Fern
<i>Cystopteris fragilis</i>	Brittle Bladder Fern
PINOPSIDA (Gymnosperms)	CONIFERS
Cupressaceae	Juniper Family
<i>Juniperus communis</i>	Common Juniper
Pinaceae	Pine Family
<i>Pinus nigra subsp. salzmanii</i>	Black Pine
<i>Pinus pinaster</i>	Maritime Pine
<i>Pinus sylvestris</i>	Scots Pine
<i>Pinus uncinata</i>	Mountain Pine
Taxaceae	Yew Family
<i>Taxus baccata</i>	Yew
MAGNOLIOPSIDA (Angiosperms)	FLOWERING PLANTS
Magnoliidae (Dicotyledons)	
Aceraceae	Maple Family
<i>Acer campestre</i>	Field Maple
<i>Acer monspessulanum</i>	Montpellier Maple
<i>Acer pseudoplatanus</i>	Sycamore
Apiaceae	Carrot Family
<i>Anthriscus sylvestris</i>	Cow Parsley

Scientific name	Common name
<i>Bupleurum rotundifolium</i>	Thorow-wax
<i>Caucalis platycarpos</i>	Small Bur-parsley
<i>Chaerophyllum temulum</i>	Rough Chervil
<i>Daucus carota</i>	Wild Carrot
<i>Eryngium campestre</i>	Field Eryngo
<i>Heracleum sphondylium subsp. sibiricum</i>	Hogweed (yellow flowered)
<i>Laserpitium latifolium</i>	Broad-leaved Sermountain
<i>Meum athamanticum</i>	Spignel
<i>Molopospermum peloponnesiacum</i>	Molopospermum (Molly)
<i>Scandix pecten-veneris</i>	Shepherd's Needle
<i>Trinia glauca</i>	Honewort
Araliaceae	Ivy Family
<i>Hedera helix</i>	Ivy
Aquifoliaceae	Holly Family
<i>Ilex aquifolium</i>	Holly
Aristolochiaceae	Birthwort Family
<i>Aristolochia clematitis</i>	Birthwort
Asclepiadaceae	Milkweed Family
<i>Vincetoxicum hirsutifolium</i>	Swallow-wort
Asteraceae	Daisy Family
<i>Achillea millefolium</i>	Yarrow
<i>Achillea odorata</i>	Fragrant Yarrow
<i>Antennaria dioica</i>	Cat's Foot
<i>Anthemis arvensis</i>	Corn Chamomile
<i>Artemisia camphorata</i>	Camphor Mugwort
<i>Aster alpinus subsp. cebennis*</i>	Alpine Aster
<i>Bellis perennis</i>	Daisy
<i>Carlina acanthifolia</i>	Acanthus-leaved C. Thistle
<i>Centaurea maculosa</i>	Spotted Knapweed
<i>Centaurea pectinata</i>	Pectinate Knapweed
<i>Cichorium intybus</i>	Chicory
<i>Cirsium palustre</i>	Marsh Thistle
<i>Cirsium eriophorum</i>	Woolly-headed Thistle
<i>Filago vulgaris</i>	Common Cudweed
<i>Helichrysum stoechas</i>	Curry Plant
<i>Hypochoeris radicata</i>	Cat's Ear
<i>Hypochoeris maculata</i>	Spotted Cat's-ear
<i>Inula montana</i>	-
<i>Lactuca perennis</i>	Blue Lettuce
<i>Lactuca serriola</i>	Prickly Lettuce
<i>Lapsana communis</i>	Nipplewort
<i>Leucanthemum monspeliense</i>	
<i>Leucanthemum vulgare</i>	Ox-eye Daisy
<i>Onopordon acanthium</i>	Cotton Thistle
<i>Pilosella officinarum</i>	Mouse-eared Hawkweed
<i>Senecio adonifolius</i>	a Ragwort
<i>Tragopogon pratensis</i>	Goatsbeard
<i>Tussilago farfara</i>	Coltsfoot

Scientific name	Common name
Balsaminaceae <i>Impatiens balfourii</i>	Balsam Family Kashmir Balsam
Betulaceae <i>Alnus glutinosa</i> <i>Betula pendula</i> <i>Corylus avellana</i>	Birch Family Alder Common Birch Hazel
Boraginaceae <i>Anchusa arvensis</i> <i>Echium vulgare</i> <i>Myosotis arvensis</i> <i>Myosotis sylvatica</i> <i>Onosma fastigiatum</i>	Borage Family Bugloss Vipers Bugloss Field Forget-me-not Wood Forget-me-not Golden Drop
Brassicaceae <i>Alliaria petiolata</i> <i>Arabis hirsuta</i> <i>Arabis turrata</i> <i>Cardamine hirsuta</i> <i>Cardamine pratensis</i> <i>Capsella bursa-pastoris</i> <i>Iberis pinnata</i> <i>Sisymbrium officinale</i> <i>Thlaspi perfoliatum</i>	Cabbage Family Garlic Mustard Hairy Rock-cress Tower Cress Hairy Bitter-cress Lady's Smock Shepherd's Purse Annual Candytuft Hedge Mustard Perfoliate Penny-cress
Buxaceae <i>Buxus sempervirens</i>	Box Family Box
Campanulaceae <i>Campanula persicifolia</i> <i>Campanula rapunculus</i> <i>Campanula rotundifolia</i> <i>Campanula speciosa</i> <i>Jasione montana</i> <i>Legousia speculum-veneris</i> <i>Phyteuma gallicum</i> <i>Phyteuma hemisphaericum</i> <i>Phyteuma orbiculare</i> <i>Phyteuma spicatum</i>	Bellflower Family Peach-leaved Bellflower Rampion Bellflower Harebell Pyrenean Bellflower Sheep's-bit Large Venus's Looking Glass Blue Rampion Globe-headed Rampion Round-headed Rampion Spiked Rampion
Cannabaceae <i>Humulus lupulus</i>	Hop Family Hop
Caprifoliaceae <i>Lonicera etrusca</i> <i>Sambucus nigra</i> <i>Viburnum lantana</i>	Honeysuckle Family Etruscan Honeysuckle Elder Wayfaring Tree
Caryophyllaceae <i>Arenaria leptoclados</i> <i>Cerastium arvense</i> <i>Cerastium fontanum</i>	Pink Family Thyme-leaved Sandwort Field Mouse-ear Common Mouse-ear

Scientific name	Common name
<i>Cerastium tormentosum</i>	Snow in Summer
<i>Dianthus carthusianorum</i>	Carthusian Pink
<i>Dianthus deltoides</i>	Maiden Pink
<i>Herniaria glabra</i>	Smooth Rupturewort
<i>Lychnis flos-cuculi</i>	Ragged Robin
<i>Moehringia trinervia</i>	Three-veined Sandwort
<i>Saponaria ocymoides</i>	Rock Soapwort
<i>Saponaria officinalis</i>	Common Soapwort
<i>Scleranthus perennis</i>	Perennial Knawel
<i>Silene armeria</i>	Sweet William Catchfly
<i>Silene conica</i>	Sand Catchfly
<i>Silene dioica</i>	Red Campion
<i>Silene latifolia</i>	White Campion
<i>Silene nutans</i>	Nottingham Catchfly
<i>Silene otites</i>	Spanish Catchfly
<i>Silene vulgaris</i>	Bladder Campion
<i>Stellaria alsine</i>	Bog Stitchwort
<i>Stellaria graminea</i>	Lesser Stitchwort
<i>Stellaria media</i>	Chickweed
Celastraceae	Spindle Family
<i>Euonymus europaeus</i>	Spindle Tree
Cistaceae	Cistus Family
<i>Helianthemum apenninum</i>	White Rockrose
<i>Helianthemum nummularium</i>	Common Rockrose
<i>H. oelandicum subsp. canum</i>	Hoary Rockrose
Clusiaceae	St John's-wort Family
<i>Hypericum perforatum</i>	Perforate St John'swort
Convolvulaceae	Bindweed family
<i>Convolvulus arvensis</i>	Field Bindweed
<i>Convolvulus cantabrica</i>	Pink Convolvulus
Cornaceae	Dogwood Family
<i>Cornus sanguinea</i>	Common Dogwood
Crassulaceae	Stonecrop Family
<i>Sedum album</i>	White Stonecrop
<i>Sedum brevifolium</i>	Small-leaved Stonecrop
<i>Sedum dasyphyllum</i>	Thick-leaved Stonecrop
<i>Sedum telephium</i>	Orpine
<i>Umbilicus rupestris</i>	Wall Pennywort
<i>Sempervivum tectorum</i>	Houseleek
Dipsacaceae	Scabious Family
<i>Dipsacus fullonum</i>	Teasel
<i>Knautia arvensis</i>	Field Scabious
Ericaceae	Heather Family
<i>Arctostaphylos uva-ursi</i>	Bearberry
<i>Calluna vulgaris</i>	Ling

Scientific name

Vaccinium myrtillus
Vaccinium vitis-idaea

Common name

Bilberry
 Cowberry

Euphorbiaceae

Euphorbia cyparissias
Euphorbia helioscopia
Euphorbia seguieriana

Spurge Family

Cyprus Spurge
 Sun Spurge
 Seguier's Spurge

Fabaceae

Anthyllis montana
Anthyllis vulneraria
Astragalus monspessulanus
Chamaespartium sagittale
Coronilla minima
Cytisus purgens
Cytisus scoparius
Dorycnium pentaphyllum
Genista pilosa
Hippocrepis comosa
Laburnum anagyroides
Lathyrus linifolius
Lathyrus pratensis
Lotus corniculatus
Medicago lupulina
Medicago sativa
Melilotus officinalis
Onobrychis viciifolia
Ononis repens
Robinia pseudacacia
Spartium junceum
Tetragonolobus maritimus
Trifolium alpinum
Trifolium campestre
Trifolium dubium
Trifolium montanum
Trifolium ochroleucum
Trifolium pratense
Trifolium repens
Vicia cracca
Vicia onobrychoides
Vicia sativa subsp. segetalis
Vicia sepium
Vicia tenuifolia

Pea Family

Mountain Kidney Vetch
 Kidney Vetch
 Montpellier Milk-vetch
 Winged Broom
 Small Scorpion Vetch
 Piorno Broom
 Common Broom
 -
 Hairy Greenweed
 Horse-shoe Vetch
 Laburnum
 Bitter vetch
 Meadow vetchling
 Bird's-foot Trefoil
 Black Medick
 Lucerne
 Common Melilot
 Common Sainfoin
 Restharrow
 Robinia (False Acacia)
 Spanish Broom
 Dragon's Teeth
 Alpine Clover
 Hop Trefoil
 Lesser Trefoil
 Mountain Clover
 Sulphur Clover
 Red Clover
 White Clover
 Tufted Vetch
 False Sainfoin
 Common Vetch
 Bush Vetch
 Narrow-leaved Vetch

Fagaceae

Castanea sativa
Fagus sylvatica
Quercus ilex
Quercus petraea
Quercus pubescens

Beech Family

Sweet Chestnut
 Beech
 Holm/Evergreen Oak
 Sessile Oak
 Downy Oak

Gentianaceae

Gentiana lutea

Gentian Family

Great Yellow Gentian

Scientific name*Gentianella campestris***Geraniaceae**

Erodium cicutarium
Geranium columbinum
Geranium lucidum
Geranium molle
Geranium pyrenaicum
Geranium purpureum
Geranium robertianum
Geranium rotundifolium

Grossulariaceae*Ribes alpinus***Juglandaceae***Juglans regia***Lamiaceae**

Ajuga genevensis
Clinopodium acinos
Lamium album
Lamium maculatum
Lamium purpureum
Oreganum vulgare
Phlomis lychnitis
Prunella grandiflora
Prunella laciniata
Salvia pratensis
Stachys recta
Teucrium botrys
Teucrium chamaedrys
Teucrium montanum
Teucrium rouyanum
Teucrium scorodonia
Thymus serpyllum
Thymus vulgaris

Linaceae

Linum narbonense
Linum suffruticosum

Malvaceae

Althaea hirsuta
Malva sylvestris

Moraceae*Ficus carica***Oleaceae***Fraxinus excelsior***Common name**

Field Gentian

Geranium Family

Common Storksbill
 Long-stalked Crane's-bill
 Shining Cranesbill
 Dove's-foot Cranesbill
 Pyrenean Crane's-bill
 Little Robin
 Herb Robert
 Round-leaved Cranesbill

Gooseberry Family

Mountain Currant

Walnut Family

Walnut

Dead-nettle Family

Blue Bugle
 Basil Thyme
 White Dead-nettle
 Spotted Dead-nettle
 Red Dead-nettle
 Marjoram
 Narrow-leaved Jerusalem Sage
 Large Selfheal
 Cut-leaved Selfheal
 Meadow Clary
 Yellow Woundwort
 Cut-leaved Germander
 Wall Gemander
 Mountain Germander
 Felty Germander
 Wood Sage
 Breckland Thyme
 Wild Thyme

Flax Family

Narbonne Flax
 White Flax

Mallow Family

Hairy Mallow
 Common Mallow

Fig Family

Fig

Olive Family

Ash

Scientific name	Common name
Onograceae <i>Chamerion angustifolium</i>	Willowherb Family Rosebay Willowherb
Orobanchaceae <i>Orobanche alba</i> <i>Orobanche amethystea</i>	Thyme Broomrape Clove-scented Broomrape
Papaveraceae <i>Chelidonium majus</i> <i>Papaver argemone</i> <i>Papaver dubium</i> <i>Papaver rhoeas</i>	Poppy Family Greater Celandine Prickly Poppy Pale Poppy Corn Poppy
Plantaginaceae <i>Plantago holosteum</i> <i>Plantago major</i> <i>Plantago media</i>	Plantain Family Great Plantain Hoary Plantain
Platanaceae <i>Platanus x hispanica</i>	Plane Family Plane Tree
Plumbaginaceae <i>Armeria maritima subsp alpina</i>	Thrift Family Mountain Thrift
Polygalaceae <i>Polygala calcarea</i> <i>Polygala serpyllifolia</i> <i>Polygala vulgaris</i>	Milkwort Family Chalk Milkwort Heath Milkwort Common Milkwort
Polygonaceae <i>Persicaria bistorta</i> <i>Rumex acetosa</i> <i>Rumex acetosella</i> <i>Rumex crispus</i> <i>Rumex obtusifolius</i> <i>Rumex scutatus</i>	Knotweed Family Bistort Sorrel Sheep's Sorrel Curled Dock Broad-leaved Dock French Sorrel
Primulaceae <i>Primula veris</i>	Primrose Family Cowslip
Pyrolaceae <i>Pyrola minor</i>	Wintergreen Family Lesser Wintergreen
Ranunculaceae <i>Adonis flammea</i> <i>Anemone nemorosa</i> <i>Caltha palustris</i> <i>Clematis vitalba</i> <i>Helleborus foetidus</i> <i>Hepatica nobilis</i> <i>Pulsatilla rubra subsp. rubra*</i> <i>Ranunculus acris</i> <i>Ranunculus bulbosus</i>	Buttercup Family Pyrenean Pheasant's Eye Wood Anemone Marsh Marigold Old Man's Beard Stinking Hellebore Hepatica Cevennes Pasque Flower Meadow Buttercup Bulbous Buttercup

Scientific name	Common name
<i>Ranunculus repens</i>	Creeping Buttercup
Resedaceae	Mignonette family
<i>Reseda jacquinii</i> *	Jaquin's Mignonette
<i>Reseda lutea</i>	Wild Mignonette
<i>Reseda luteola</i>	Weld
<i>Reseda phyteuma</i>	Corn Mignonette
<i>Sesamoides pygmaea</i>	Sesamoides
Rosaceae	Rose Family
<i>Alchemilla alpina</i>	Alpine lady's-mantle
<i>Amelanchier ovalis</i>	Amelanchier (Snowy Mespilus)
<i>Crataegus monogyna</i>	Hawthorn
<i>Filipendula ulmaria</i>	Meadowsweet
<i>Filipendula vulgaris</i>	Dropwort
<i>Fragaria vesca</i>	Wild Strawberry
<i>Geum urbanum</i>	Herb Bennet
<i>Potentilla aurea</i>	Golden Cinquefoil
<i>Potentilla caulescens subsp. cebennensis</i> *	Cevennes Cinquefoil
<i>Potentilla reptans</i>	Creeping Cinquefoil
<i>Potentilla rupestris</i>	Rock Cinquefoil
<i>Poterium officinalis</i>	Mediterranean Salad Burnet
<i>Prunus avium</i>	Wild Cherry
<i>Prunus mahaleb</i>	St Lucie's Cherry
<i>Prunus spinosa</i>	Blackthorn
<i>Rosa arvensis</i>	Field Rose
<i>Rosa canina</i>	Dog Rose
<i>Rubus fruticosus</i>	Bramble
<i>Sanguisorba minor</i>	Salad Burnet
<i>Sorbus aria</i>	Whitebeam
<i>Sorbus aucuparia</i>	Mountain Ash
Rubiaceae	Bedstraw family
<i>Cruciata laevipes</i>	Crosswort
<i>Galium lucidum</i>	Shining Bedstraw
<i>Galium mollugo</i>	Hedge Bedstraw
<i>Gallium saxatile</i>	Heath Bedstraw
<i>Rubia peregrina</i>	Wild Madder
<i>Sherardia arvensis</i>	Field Madder
Salicaceae	Willow Family
<i>Populus alba</i>	White Poplar
<i>Populus x canescens</i>	Hybrid Black Poplar
<i>Populus nigra</i> agg.	Black Poplar
<i>Populus tremula</i>	Aspen
<i>Salix alba</i>	White Willow
<i>Salix cinerea</i>	Grey Willow
<i>Salix eleagnos</i>	
<i>Salix fragilis</i>	Crack Willow
Santalaceae	Sandalwood Family
<i>Thesium divaricatum</i>	Bastard Toadflax

Scientific name	Common name
Saxifragaceae	Saxifrage Family
<i>Saxifraga cebennensis</i> *	Cevennes Saxifrage
<i>Saxifraga granulata</i>	Meadow Saxifrage
Scrophulariaceae	Figwort Family
<i>Anarrhinum bellidifolium</i>	Daisy-leaved Toadflax
<i>Antirrhinum majus</i>	Large Snapdragon
<i>Asarina procumbens</i>	Creeping Snapdragon
<i>Cymbalaria muralis</i>	Ivy-leaved Toadflax
<i>Digitalis lutea</i>	Small yellow Foxglove
<i>Digitalis purpurea</i>	Foxglove
<i>Linaria repens</i>	Striped Toadflax
<i>Linaria supina</i>	Dwarf Toadflax
<i>Rhinanthus mediterraneus</i>	Mediterranean Rattle
<i>Rhinanthus minor</i>	Yellow Rattle
<i>Scrophularia canina</i>	French Figwort
<i>Verbascum pulverulentum</i>	Hoary Mullien
<i>Veronica arvensis</i>	Wall Speedwell
<i>Veronica chamaedrys</i>	Germander Speedwell
<i>Veronica hederifolia</i>	Ivy-leaved Speedwell
<i>Veronica officinalis</i>	Heath Speedwell
<i>Veronica persica</i>	Common Speedwell
<i>Veronica polita</i>	Grey Field Speedwell
<i>Veronica prostrata</i>	Prostrate Speedwell
Tiliaceae	Lime Family
<i>Tilia x europaea</i>	Common Lime
Ulmaceae	Elm Family
<i>Ulmus glabra</i>	Wych Elm
<i>Ulmus minor</i>	Small -leaved Elm
Urticeae	Nettle Family
<i>Parietaria judaica</i>	Pellitory-of-the-wall
<i>Urtica dioica</i>	Nettle
Valerianaceae	Valerian Family
<i>Centranthus ruber</i>	Red Valerian
<i>Centranthus calcitrapae</i>	Annual Valerian
<i>Centranthus lecoquii</i>	Cevennes Valerian
Violaceae	Violet Family
<i>Viola arvensis</i>	Field Pansy
<i>Viola canina</i>	Heath Pansy
<i>Viola kitaibeliana</i>	Dwarf Pansy
<i>Viola lutea</i>	Mountain Pansy
<i>Viola riviniana</i>	Common Dog violet
<i>Viola tricolor</i>	Heart's-ease
Liliidae (Monocotyledons)	
Cyperaceae	Sedge Family
<i>Carex caryophyllea</i>	Spring Sedge
<i>Carex flacca</i>	Glaucous Sedge

Scientific name*Eriophorum angustifolium***Dioscoreaceae***Tamus communis***Juncaceae***Juncus effusus**Juncus inflexus**Luzula campestris**Luzula nivea***Liliaceae***Allium ursinum**Anthericum liliago**Aphyllanthes monspeliensis**Colchicum autumnale**Lilium martagon**Muscari comosum**Narcissus poeticus**Ornithogalum umbellatum**Ornithogalum spicatum**Ruscus aculeatus***Orchidaceae***Anacamptis pyramidalis**Anacamptis coriophora ssp fragrans**Cephalanthera damasonium**Cephalanthera rubra**Coeloglossum viride**Dactylorhiza fuschii**Dactylorhiza maculata**Dactylorhiza majalis**Dactylorhiza sambucina**Epipactis atrorubens**Gymnadenia conopsea**Neottia ovata**Neotinea ustulata**Orchis militaris**Orchis morio**Orchis simia**Plantanthera chlorantha***Poaceae***Arrhenatherum elatius**Brachypodium sylvaticum**Bromopsis erectus**Dactylis glomerata**Festuca ovina**Melica uniflora**Poa annua**Poa nemoralis**Poa trivialis**Stipa pennata***Common name**

Common Cotton Grass

Yam Family

Black Bryony

Rush Family

Soft rush

Hard Rush

Field Woodrush

Snowy Woodrush

Lily Family

Wild Garlic

St Bernard's Lily

Blue Aphyllanthes

Meadow Saffron

Martagon Lily

Tassel Hyacinth

Pheasant's Eye Daffodil

Common Star of Bethlehem

Bath Asparagus

Butcher's Broom

Orchid Family

Pyramidal Orchid

Bug Orchid

White Helleborine

Red Helleborine

Frog Orchid

Common Spotted Orchid

Heath Spotted Orchid

Broad-leaved Marsh Orchid

Elder-flowered Orchid

Dark Red Helleborine

Fragrant Orchid

Twayblade

Burnt-tip Orchid

Military Orchid

Green-winged Orchid

Monkey Orchid

Greater Butterfly Orchid

Grass Family

False Oat-grass

False Brome

Upright Brome

Cocksfoot

Sheep's Fescue

Wood Melick

Annual Meadow-grass

Wood Meadow-grass

Rough Meadow-grass

Feather Grass

Birds (✓ = recorded but not counted H = heard only)

	Common name	Scientific name	June							
			14	15	16	17	18	19	20	21
1	Mallard	<i>Anas platyrhynchos</i>								✓
2	Grey Heron	<i>Ardea cinerea</i>			✓	✓				
3	Eurasian Griffon Vulture	<i>Gyps fulvus</i>		4	1	2	30+	12+	30+	
4	Black Vulture	<i>Aegypius monachus</i>					1			
5	Short-toed Eagle	<i>Circaetus gallicus</i>	1	1		2			1	
6	Black Kite	<i>Milvus migrans</i>	1	1					2	1
7	Hen Harrier	<i>Circus cyaneus</i>							2f	
8	Montagu's Harrier	<i>Circus pygargus</i>		1			1		1	
9	Common Buzzard	<i>Buteo buteo</i>			1	2		2		2
10	Common Kestrel	<i>Falco tinnunculus</i>	2		1			1	1	
11	Quail	<i>Coturnix coturnix</i>						H	H	
12	Rock Dove/Feral Pigeon	<i>Columba livia</i>			✓		✓			✓
13	Common Wood Pigeon	<i>Columba palumbus</i>	1				H			
14	Eurasian Collared Dove	<i>Streptopelia decaocto</i>	✓	✓	✓	✓	✓	✓	✓	✓
15	Common Cuckoo	<i>Cuculus canorus</i>		H	H	H	H	H	H	H
16	Tawny Owl	<i>Strix aluco</i>		H	H					
17	Common Swift	<i>Apus apus</i>	✓	✓	✓	✓	✓	✓	✓	✓
18	Hoopoe	<i>Upupa epops</i>							H	
19	Black Woodpecker	<i>Dryocopus martius</i>				H				
20	European Green Woodpecker	<i>Picus viridis</i>	H	H						
21	Great Spotted Woodpecker	<i>Dendrocopos major</i>		H						
22	Common Skylark	<i>Alauda arvensis</i>		H	2		H	c6	c8	2
23	Woodlark	<i>Lullula arborea</i>		H	H	2	H	3		
24	Eurasian Crag Martin	<i>Ptyonoprogne rupestris</i>		2			2	3	c12	
25	Barn Swallow	<i>Hirundo rustica</i>	✓	✓	✓			✓		✓
26	Common House Martin	<i>Delichon urbica</i>	✓	✓	✓					✓
27	Tree Pipit	<i>Anthus trivialis</i>		H	4	1	5	1		
28	White Wagtail	<i>Motacilla alba</i>		✓				✓	✓	✓
29	Grey Wagtail	<i>Motacilla cinerea</i>		✓	✓		1			
30	Wren	<i>Troglodytes troglodytes</i>		H		H			H	
31	Dunnock	<i>Prunella modularis</i>		H						
32	European Robin	<i>Erithacus rubecula</i>		H	H		H		H	
33	Common Nightingale	<i>Luscinia megarhynchos</i>		H	H	H	H	H	H	
34	Black Redstart	<i>Phoenicurus ochruros</i>	✓	✓	✓	✓	✓	✓	✓	✓
35	Northern Wheatear	<i>Oenanthe oenanthe</i>			c6				2	
36	Common Stonechat	<i>Saxicola torquata</i>							c8	
37	Mistle Thrush	<i>Turdus viscivorus</i>			H		H			
38	Common Blackbird	<i>Turdus merula</i>	✓	✓	✓	✓	✓	✓	✓	✓
39	Ring Ouzel	<i>Turdus torquatus</i>			2					
40	Garden Warbler	<i>Sylvia borin</i>					H			
41	Blackcap	<i>Sylvia atricapilla</i>		H	H	H	H	H	H	H
42	Whitethroat	<i>Sylvia communis</i>			1	H			H	
43	Subalpine Warbler	<i>Sylvia cantillans</i>								H
44	Orphean Warbler	<i>Sylvia hortensis</i>								H
45	Melodious Warbler	<i>Hippolais polyglotta</i>				1				
46	Bonelli's Warbler	<i>Phylloscopus bonelli</i>		H				c6	c8	
47	Common Chiffchaff	<i>Phylloscopus collybita</i>		✓	H	H	H		H	
48	Goldcrest	<i>Regulus regulus</i>				H				
49	Great Tit	<i>Parus major</i>	✓		✓			✓		

	Common name	Scientific name	June							
			14	15	16	17	18	19	20	21
50	Coal Tit	<i>Periparus ater</i>					2			
51	European Blue Tit	<i>Cyanistes caeruleus</i>	✓	✓						
52	Crested Tit	<i>Lophophanes cristatus</i>			H					
53	Red-backed Shrike	<i>Lanius collurio</i>		1	1		1	1	3	1
54	Common Magpie	<i>Pica pica</i>	✓	✓	✓		✓	✓		✓
55	Eurasian Jay	<i>Garrulus glandarius</i>	✓	✓	✓	✓	✓	✓	✓	✓
56	Western Jackdaw	<i>Corvus monedula</i>		✓				✓	✓	
57	Red-billed Chough	<i>Pyrrhocorax pyrrhocorax</i>		c20			c150	c6	c20	
58	Carrion Crow	<i>Corvus corone</i>	✓	✓			✓	✓	✓	✓
59	Common Raven	<i>Corvus corax</i>					3		4	
60	Common Starling	<i>Sturnus vulgaris</i>	✓	✓					✓	✓
61	Golden Oriole	<i>Oriolus oriolus</i>								H
62	House Sparrow	<i>Passer domesticus</i>	✓	✓	✓	✓	✓	✓	✓	✓
63	Common Chaffinch	<i>Fringilla coelebs</i>	✓	✓	✓	✓	✓	✓	✓	✓
64	Common Linnet	<i>Carduelis cannabina</i>			✓		✓		✓	
65	European Goldfinch	<i>Carduelis carduelis</i>		✓		✓		✓	H	✓
66	European Greenfinch	<i>Carduelis chloris</i>		H		✓				
67	European Serin	<i>Serinus serinus</i>	H		✓	✓		✓	H	
68	Common Crossbill	<i>Loxia curvirostra</i>			H					
69	Yellowhammer	<i>Emberiza citrinella</i>		✓		✓	✓		✓	H
70	Cirl Bunting	<i>Emberiza cirlus</i>		H				H		
71	Corn Bunting	<i>Emberiza calandra</i>						H		

Butterflies

		Hesperiidae								
1	Red-underwing Skipper	<i>Spialia setorius</i>				1				
2	Dingy Skipper	<i>Erynnis tages</i>			✓					
3	Safflower Skipper	<i>Pyrgus carthami</i>		2					c6	
4	Grizzled Skipper	<i>Pyrgus malvae</i>					✓			
5	Oberthur's Grizzled Skipper	<i>Pyrgus armoricanus</i>				1		2		
6	Large Grizzled Skipper	<i>Pyrgus alveus</i>						1		
		Papilionidae								
7	Scarce Swallowtail	<i>Iphiclides podalirius</i>							1	
8	Swallowtail	<i>Papilio machaon</i>							1	
		Pieridae								
9	Wood White	<i>Leptidea sinapis</i>								1
10	Large White	<i>Pieris brassicae</i>		✓	✓	✓	✓	✓	✓	
11	Small White	<i>Pieris rapae</i>		✓	✓	✓	✓	✓	✓	✓
12	Black-veined White	<i>Aporia crataegi</i>		✓	✓	✓		✓	✓	✓
13	Orange-tip	<i>Anthocharis cardamines</i>		1						
14	Bath White	<i>Pontia daplidice</i>								c12
15	Clouded Yellow	<i>Colias crocea</i>		✓	✓	✓	✓	✓	✓	✓
16	Berger's Clouded Yellow	<i>Colias alfacariensis</i>		✓	✓	✓		✓	✓	✓
17	Cleopatra	<i>Gonepteryx cleopatra</i>				1			1	3
18	Brimstone	<i>Gonepteryx rhamni</i>	✓							
		Lycaenidae								
19	Duke of Burgundy	<i>Hamaeris lucina</i>					1			
20	Blue-spot Hairstreak	<i>Satyrium spini</i>							4	
21	Sloe Hairstreak	<i>Satyrium acaciae</i>								1
22	Ilex Hairstreak	<i>Satyrium ilicis</i>							2	
23	False Ilex Hairstreak	<i>Satyrium esculi</i>								2

	Common name	Scientific name	June							
			14	15	16	17	18	19	20	21
24	Green Hairstreak	<i>Callophrys rubi</i>			c12					
25	Purple-shot Copper	<i>Lycaena alciphron</i>		2		2			2	
26	Brown Argus	<i>Aricia agestis</i>				✓	✓		✓	
27	Mazarine Blue	<i>Cyaniris semiargus</i>				1	1		1	
28	Little Blue	<i>Cupido minimus</i>		✓		✓	✓		✓	
29	Osiris Blue	<i>Cupido osiris</i>		1						
30	Holly Blue	<i>Celastrina argiolus</i>				1				
31	Green-underside Blue	<i>Glaucopsyche alexis</i>				1				
32	Large Blue	<i>Maculinea arion</i>				2	4			
33	Alcon Blue	<i>Maculinea alcon</i>					1			
34	Common Blue	<i>Polyommatus icarus</i>		✓	✓	✓		✓	✓	
35	Escher's Blue	<i>Polyommatus escheri</i>				c24		2	c6	
36	Chapman's Blue	<i>Polyommatus thersites</i>						2		
37	Turquoise Blue	<i>Polyommatus dorylas</i>		1				c12	c6	
38	Adonis Blue	<i>Lysandra bellargus</i>		c24		c6		2		
39	Silver-studded Blue	<i>Plebejus argus</i>				1	6		2	
		Nymphalidae								
40	Southern White Admiral	<i>Lemenitis reducta</i>				1				
41	Small Tortoiseshell	<i>Aglais urticae</i>			✓		✓			
42	Peacock Butterfly	<i>Inachis io</i>						✓		
43	Painted Lady	<i>Vanessa cardui</i>								✓
44	Dark Green Fritillary	<i>Argynnis aglaja</i>				1				
45	Niobe Fritillary	<i>Argynnis niobe</i>				3			1	
46	Queen of Spain Fritillary	<i>Issoria lathonia</i>		1	2		1		3	
47	Small Pearl-bordered Fritillary	<i>Boloria selene</i>			2		1			
48	Pearl-bordered Fritillary	<i>Boloria euphrosyne</i>			c20				1	1
49	Knapweed Fritillary	<i>Melitaea phoebe</i>		1					1	
50	Spotted Fritillary	<i>Melitaea didyma</i>							1	1
51	Meadow Fritillary	<i>Mellicta parthenoides</i>				c12	c12	c6	2	
52	Heath Fritillary	<i>Mellicta athalia</i>		1			1		1	
		Satyrinae								
53	Speckled Wood	<i>Pararge aegeria</i>		✓			✓			
54	Wall Brown	<i>Lasiommata megera</i>		✓		✓	✓		✓	✓
55	Large Wall Brown	<i>Lasiommata maera</i>							c6	
56	Mountain Ringlet	<i>Erebia epiphron</i>					c12			
57	Piedmont Ringlet	<i>Erebia meolans</i>			c6	c12	c20			
58	Esper's Marbled White	<i>Melanargia russiae</i>		2					c12	
59	Common Marbled White	<i>Melanargia galathea</i>						✓	✓	
60	Great Banded Grayling	<i>Brintesia circe</i>								c12
61	Grayling	<i>Hipparchia semele</i>								1
62	Meadow Brown	<i>Maniola jurtina</i>		✓	✓	✓	✓	✓	✓	✓
63	Pearly Heath	<i>Coenonympha arcania</i>		4	2		2	4	3	
64	Small Heath	<i>Coenonympha pamphilus</i>		✓	✓	✓	✓	✓	✓	✓

Moths

Chimney Sweeper, *Odezia atrata*

Common Heath, *Ematurga atomaria*

Black-veined Moth, *Siona lineata*

Lime Hawkmoth, *Mimas tilae*

Speckled Yellow, *Pseudopanthera macularia*

Mother Shipton, *Callistege mi*

Cream Spot Tiger, *Arctia villica*

Brown Silver-line, *Petrophora chlorosata*

Lace Border, *Scopula ornata*

a micro moth, *Pyrausta nigrata*

Other invertebrates

an Ascalaphid, *Libelloides longicornis*

Greater Beefly, *Bombylius major*

Field Cricket, *Grillus campestris*

Broad-bodied Chaser, *Libellula depressa*

Ground Beetle, *Carabus auratus*

Lesser Beefly, *Bombylius minor*

Fire Bug, *Pyrrhocoris apterus*

Tiger Beetle, *Cicindela campestris*

Beautiful Demoiselle, *Agrion virgo*

Mayfly, *Ephemeroptera sp*

Reptiles & Amphibians

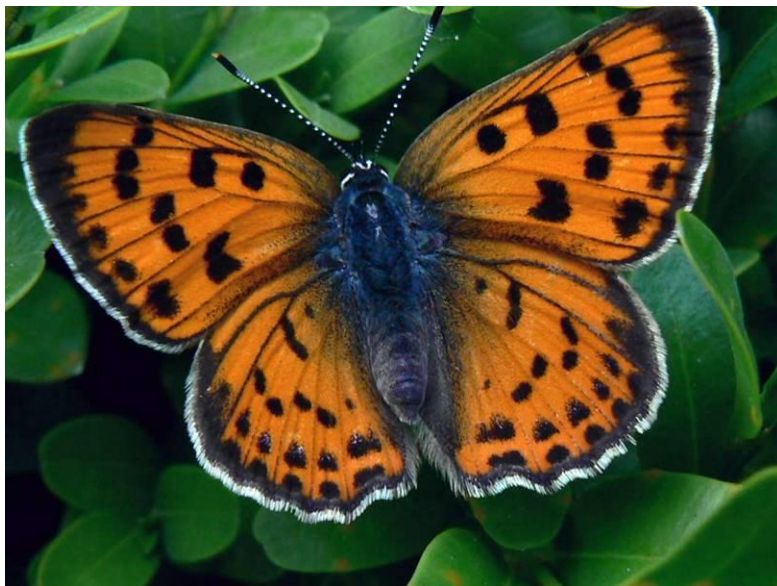
Green Lizard, *Lacerta viridis*

Sand Lizard, *Lacerta agilis*

Common Frog, *Rana temporaria*

Wall Lizard, *Podarcis muralis*

Viviparous Lizard, *Lacerta vivipara*



Female Purple-shot Copper